

DATASHEET

SARP3 Rabbit Polyclonal Antibody

CAT. NO. APA16826

KEY FEATURES

Target	SARP3	Source / Host	Rabbit
Reactivity	Human, Mouse	Clonality	Polyclonal
Applications	WB, IHC, IF/ICC	Conjugation	Unconjugated
Form / Buffer	Liquid in 0.42% Potassium phosphate, 0.87% Sodium chloride, pH 7.3, 30% glycerol, and 0.01% sodium azide.		Storage at-20°C

BACKGROUND

Soluble frizzled-related proteins (sFRPs) function as modulators of Wnt signaling through direct interaction with Wnts. They have a role in regulating cell growth and differentiation in specific cell types. SFRP5 may be involved in determining the polarity of photoreceptor, and perhaps, other cells in the retina.

APPLICATION

To ensure optimal assay performance, AREX recommends conducting reagent titration tailored to each testing system for optimal detection results.

WB	1:500 - 1:2000
IHC	1:50 - 1:200
IF/ICC	1:50 - 1:200

*Results are sample-specific. Please refer to your local assay conditions and test parameters for reference.

PRODUCT OVERVIEW

Description	Rabbit polyclonal antibody to SARP3
Specificity	Recognizes endogenous levels of SARP3 protein
Antibody Type	Primary antibody
Immunogen	Recombinant fusion protein of human SARP3. The exact sequence is proprietary.
Purification	The antibody was purified by immunogen affinity chromatography.
Molecular Weight	Predicted: 35 kD; Observed: 32 kD
Form/Buffer	Liquid in 0.42% Potassium phosphate, 0.87% Sodium chloride, pH 7.3, 30% glycerol, and 0.01% sodium azide.
Alternative Names	FRP1B; SARP3; Secreted frizzled-related protein 5; sFRP-5; Frizzled-related protein 1b; FRP-1b; Secreted apoptosis-related protein 3; SARP-3
Gene Symbol	SFRP5
Entrez Gene	6425(Human); 54612(Mouse)
SwissProt	Q5T4F7(Human); Q9WU66(Mouse)

*AREX continuously optimizes our products. Webpage content may not reflect the latest updates. For inquiries, please contact info@arexbio.com or your local distributor.

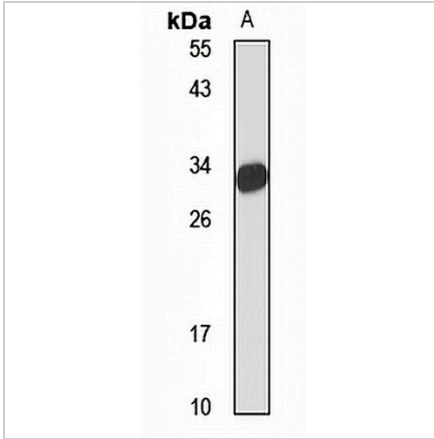
*Clone Number, Reactivity, Source/Host and Clonality can be found in the product name and Key Features section above.

DATASHEET

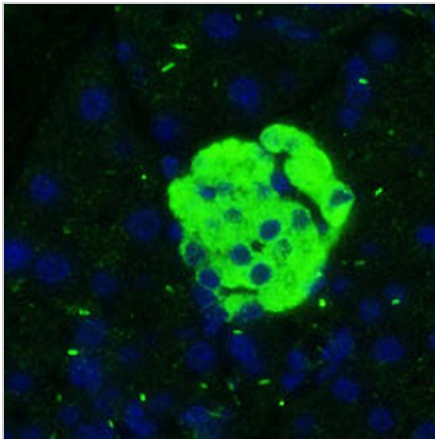
SARP3 Rabbit Polyclonal Antibody

CAT. NO. APA16826

DATA



Western blot analysis of SARP3 expression in mouse pancreas (A) whole cell lysates. (Predicted band size: 35 kD; Observed band size: 32 kD)



Immunofluorescent analysis of SARP3 staining in mouse pancreas tissues. Formalin-fixed cells were permeabilized with 0.1% Triton X-100 in TBS for 5-10 minutes and blocked with 3% BSA-PBS for 30 minutes at room temperature. Cells were probed with the primary antibody in 3% BSA-PBS and incubated overnight at 4 °C in a humidified chamber. Cells were washed with PBST and incubated with a Alexa Fluor 488-conjugated secondary antibody (green) in PBS at room temperature in the dark.

STORAGE

Store at 4°C short term. For long term storage, store at -20°C, avoiding freeze/thaw cycles.

NOTE

For Research Use Only. Not for diagnostic, therapeutics, prophylactic or in vivo use.