

DATASHEET

Sideroflexin-1 Rabbit Polyclonal Antibody

CAT. NO. APA16828

KEY FEATURES

Target	Sideroflexin-1	Source / Host	Rabbit
Reactivity	Human, Mouse, Rat	Clonality	Polyclonal
Applications	WB	Conjugation	Unconjugated
Form / Buffer	Liquid in 0.42% Potassium phosphate, 0.87% Sodium chloride, pH 7.3, 30% glycerol, and 0.01% sodium azide.		Storage at -20°C

BACKGROUND

Amino acid transporter importing serine, an essential substrate of the mitochondrial branch of the one-carbon pathway, into mitochondria. Mitochondrial serine is then converted to glycine and formate, which exits to the cytosol where it is used to generate the charged folates that serve as one-carbon donors. May also transport other amino acids including alanine and cysteine.

APPLICATION

To ensure optimal assay performance, AREX recommends conducting reagent titration tailored to each testing system for optimal detection results.

WB	1:500 - 1:2000
----	----------------

*Results are sample-specific. Please refer to your local assay conditions and test parameters for reference.

PRODUCT OVERVIEW

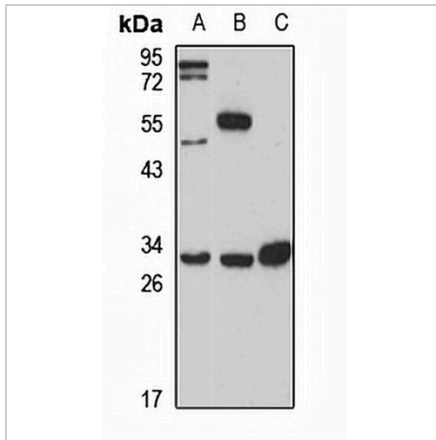
Description	Rabbit polyclonal antibody to Sideroflexin-1
Specificity	Recognizes endogenous levels of Sideroflexin-1 protein
Antibody Type	Primary antibody
Immunogen	Recombinant fusion protein of human Sideroflexin-1. The exact sequence is proprietary.
Purification	The antibody was purified by immunogen affinity chromatography.
Molecular Weight	Predicted: 35 kD; Observed: 30 kD
Form/Buffer	Liquid in 0.42% Potassium phosphate, 0.87% Sodium chloride, pH 7.3, 30% glycerol, and 0.01% sodium azide.
Alternative Names	Sideroflexin-1; Tricarboxylate carrier protein; TCC
Gene Symbol	SFXN1
Entrez Gene	94081(Human); 14057(Mouse)
SwissProt	Q9H9B4(Human); Q99JR1(Mouse); Q63965(Rat)

*AREX continuously optimizes our products. Webpage content may not reflect the latest updates. For inquiries, please contact info@arexbio.com or your local distributor.

*Clone Number, Reactivity, Source/Host and Clonality can be found in the product name and Key Features section above.

DATASHEET**Sideroflexin-1 Rabbit Polyclonal Antibody**

CAT. NO. APA16828

DATA

Western blot analysis of Sideroflexin-1 expression in HeLa (A), mouse brain (B), rat liver (C) whole cell lysates. (Predicted band size: 35 kD; Observed band size: 30 kD)

STORAGE

Store at 4°C short term. For long term storage, store at -20°C, avoiding freeze/thaw cycles.

NOTE

For Research Use Only. Not for diagnostic, therapeutics, prophylactic or in vivo use.