

DATASHEET

Sideroflexin-3 Rabbit Polyclonal Antibody

CAT. NO. APA16829

KEY FEATURES

Target	Sideroflexin-3	Source / Host	Rabbit
Reactivity	Human, Mouse, Rat	Clonality	Polyclonal
Applications	WB	Conjugation	Unconjugated
Form / Buffer	Liquid in 0.42% Potassium phosphate, 0.87% Sodium chloride, pH 7.3, 30% glycerol, and 0.01% sodium azide.		Storage at -20°C

BACKGROUND

Mitochondrial serine transporter that mediates transport of serine into mitochondria, an important step of the one-carbon metabolism pathway. Mitochondrial serine is converted to glycine and formate, which then exits to the cytosol where it is used to generate the charged folates that serve as one-carbon donors.

APPLICATION

To ensure optimal assay performance, AREX recommends conducting reagent titration tailored to each testing system for optimal detection results.

WB	1:500 - 1:2000
----	----------------

*Results are sample-specific. Please refer to your local assay conditions and test parameters for reference.

PRODUCT OVERVIEW

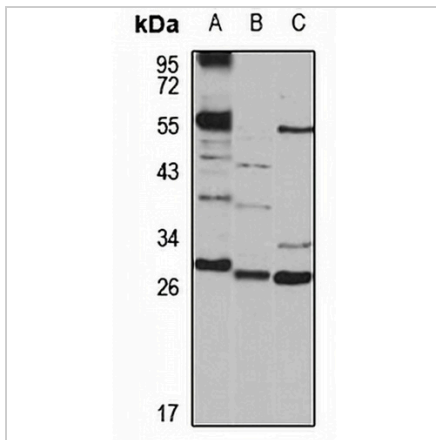
Description	Rabbit polyclonal antibody to Sideroflexin-3
Specificity	Recognizes endogenous levels of Sideroflexin-3 protein
Antibody Type	Primary antibody
Immunogen	Recombinant fusion protein of human Sideroflexin-3. The exact sequence is proprietary.
Purification	The antibody was purified by immunogen affinity chromatography.
Molecular Weight	Predicted: 35 kD; Observed: 30 kD
Form/Buffer	Liquid in 0.42% Potassium phosphate, 0.87% Sodium chloride, pH 7.3, 30% glycerol, and 0.01% sodium azide.
Alternative Names	Sideroflexin-3
Gene Symbol	SFXN3
Entrez Gene	81855(Human); 94280(Mouse); 65042(Rat)
SwissProt	Q9BWM7(Human); Q91V61(Mouse); Q9JHY2(Rat)

*AREX continuously optimizes our products. Webpage content may not reflect the latest updates. For inquiries, please contact info@arexbio.com or your local distributor.

*Clone Number, Reactivity, Source/Host and Clonality can be found in the product name and Key Features section above.

DATASHEET**Sideroflexin-3 Rabbit Polyclonal Antibody**

CAT. NO. APA16829

DATA

Western blot analysis of Sideroflexin-3 expression in SHSY5Y (A), mouse kidney (B), rat brain (C) whole cell lysates. (Predicted band size: 35 kD; Observed band size: 30 kD)

STORAGE

Store at 4°C short term. For long term storage, store at -20°C, avoiding freeze/thaw cycles.

NOTE

For Research Use Only. Not for diagnostic, therapeutics, prophylactic or in vivo use.