

DATASHEET

Endophilin-B1 Rabbit Polyclonal Antibody

CAT. NO. APA16838

KEY FEATURES

Target	Endophilin-B1	Source / Host	Rabbit
Reactivity	Human, Mouse, Rat	Clonality	Polyclonal
Applications	WB	Conjugation	Unconjugated
Form / Buffer	Liquid in 0.42% Potassium phosphate, 0.87% Sodium chloride, pH 7.3, 30% glycerol, and 0.01% sodium azide.		Storage at-20°C

BACKGROUND

May be required for normal outer mitochondrial membrane dynamics . Required for coatomer-mediated retrograde transport in certain cells . May recruit other proteins to membranes with high curvature. May promote membrane fusion . Involved in activation of caspase-dependent apoptosis by promoting BAX/BAK1 activation . Isoform 1 acts proapoptotic in fibroblasts . Involved in caspase-independent apoptosis during nutrition starvation and involved in the regulation of autophagy. Activates lipid kinase activity of PIK3C3 during autophagy probably by associating with the PI3K complex II (PI3KC3-C2) .

APPLICATION

To ensure optimal assay performance, AREX recommends conducting reagent titration tailored to each testing system for optimal detection results.

WB	1:500 - 1:2000
----	----------------

*Results are sample-specific. Please refer to your local assay conditions and test parameters for reference.

PRODUCT OVERVIEW

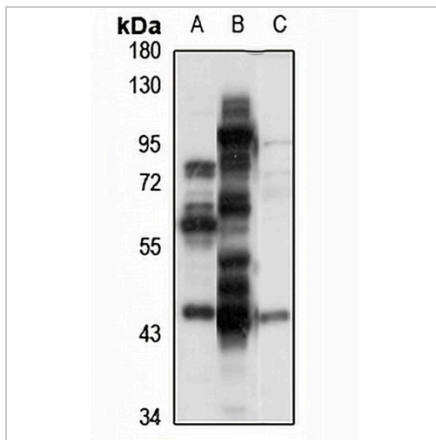
Description	Rabbit polyclonal antibody to Endophilin-B1
Specificity	Recognizes endogenous levels of Endophilin-B1 protein
Antibody Type	Primary antibody
Immunogen	Recombinant fusion protein of human Endophilin-B1. The exact sequence is proprietary.
Purification	The antibody was purified by immunogen affinity chromatography.
Molecular Weight	Predicted: 29; Observed: 44 kD
Form/Buffer	Liquid in 0.42% Potassium phosphate, 0.87% Sodium chloride, pH 7.3, 30% glycerol, and 0.01% sodium azide.
Alternative Names	KIAA0491; Endophilin-B1; Bax-interacting factor 1; Bif-1; SH3 domain-containing GRB2-like protein B1
Gene Symbol	SH3GLB1
Entrez Gene	51100(Human); 54673(Mouse); 292156(Rat)
SwissProt	Q9Y371(Human); Q9JK48(Mouse); Q6AYE2(Rat)

*AREX continuously optimizes our products. Webpage content may not reflect the latest updates. For inquiries, please contact info@arexbio.com or your local distributor.

*Clone Number, Reactivity, Source/Host and Clonality can be found in the product name and Key Features section above.

DATASHEET**Endophilin-B1 Rabbit Polyclonal Antibody**

CAT. NO. APA16838

DATA

Western blot analysis of Endophilin-B1 expression in A549 (A), mouse brain (B), mouse lung (C) whole cell lysates. (Predicted band size: 29; 40; 43 kD; Observed band size: 44 kD)

STORAGE

Store at 4°C short term. For long term storage, store at -20°C, avoiding freeze/thaw cycles.

NOTE

For Research Use Only. Not for diagnostic, therapeutics, prophylactic or in vivo use.