

## DATASHEET

# CIN85 Rabbit Polyclonal Antibody

CAT. NO. APA16839

### KEY FEATURES

Target	CIN85	Source / Host	Rabbit
Reactivity	Human, Mouse, Rat	Clonality	Polyclonal
Applications	WB	Conjugation	Unconjugated
Form / Buffer	Liquid in 0.42% Potassium phosphate, 0.87% Sodium chloride, pH 7.3, 30% glycerol, and 0.01% sodium azide.		Storage at-20°C

### BACKGROUND

Adapter protein involved in regulating diverse signal transduction pathways. Involved in the regulation of endocytosis and lysosomal degradation of ligand-induced receptor tyrosine kinases, including EGFR and MET/hepatocyte growth factor receptor, through an association with CBL and endophilins. The association with CBL, and thus the receptor internalization, may be inhibited by an interaction with PDCD6IP and/or SPRY2. Involved in regulation of ligand-dependent endocytosis of the IgE receptor. Attenuates phosphatidylinositol 3-kinase activity by interaction with its regulatory subunit. May be involved in regulation of cell adhesion; promotes the interaction between TTK2B and PDCD6IP.

### APPLICATION

To ensure optimal assay performance, AREX recommends conducting reagent titration tailored to each testing system for optimal detection results.

WB	1:500 - 1:2000
----	----------------

\*Results are sample-specific. Please refer to your local assay conditions and test parameters for reference.

### PRODUCT OVERVIEW

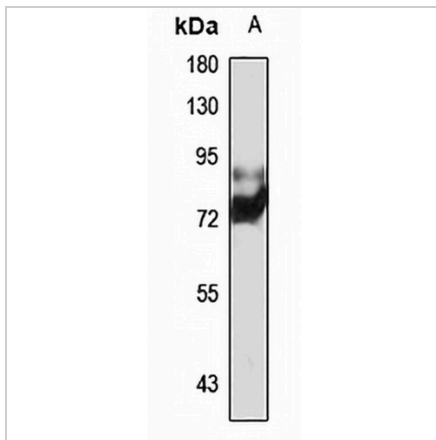
Description	Rabbit polyclonal antibody to CIN85
Specificity	Recognizes endogenous levels of CIN85 protein
Antibody Type	Primary antibody
Immunogen	Recombinant fusion protein of human CIN85. The exact sequence is proprietary.
Purification	The antibody was purified by immunogen affinity chromatography.
Molecular Weight	Predicted: 46; Observed: 73 kD
Form/Buffer	Liquid in 0.42% Potassium phosphate, 0.87% Sodium chloride, pH 7.3, 30% glycerol, and 0.01% sodium azide.
Alternative Names	CIN85; SH3 domain-containing kinase-binding protein 1; CD2-binding protein 3; CD2BP3; Cbl-interacting protein of 85 kDa; Human Src family kinase-binding protein 1; HSB-1
Gene Symbol	SH3KBP1
Entrez Gene	30011(Human); 58194(Mouse); 84357(Rat)
SwissProt	Q96B97(Human); Q8R550(Mouse); Q925Q9(Rat)

\*AREX continuously optimizes our products. Webpage content may not reflect the latest updates. For inquiries, please contact [info@arexbio.com](mailto:info@arexbio.com) or your local distributor.

\*Clone Number, Reactivity, Source/Host and Clonality can be found in the product name and Key Features section above.

**DATASHEET****CIN85 Rabbit Polyclonal Antibody**

CAT. NO. APA16839

**DATA**

Western blot analysis of CIN85 expression in THP1 (A) whole cell lysates. (Predicted band size: 46; 68; 73 kD; Observed band size: 73 kD)

**STORAGE**

Store at 4°C short term. For long term storage, store at -20°C, avoiding freeze/thaw cycles.

**NOTE**

For Research Use Only. Not for diagnostic, therapeutics, prophylactic or in vivo use.