

DATASHEET

Sur-8 Rabbit Polyclonal Antibody

CAT. NO. APA16840

KEY FEATURES

Target	Sur-8	Source / Host	Rabbit
Reactivity	Human, Mouse, Rat	Clonality	Polyclonal
Applications	WB, IHC, IF/ICC	Conjugation	Unconjugated
Form / Buffer	Liquid in 0.42% Potassium phosphate, 0.87% Sodium chloride, pH 7.3, 30% glycerol, and 0.01% sodium azide.		Storage at -20°C

BACKGROUND

Core component of the SHOC2-MRAS-PP1c (SMP) holophosphatase complex that regulates activation of the MAPK pathway . Acts as a scaffolding protein in the SMP complex . The SMP complex specifically dephosphorylates the inhibitory phosphorylation at 'Ser-259' of RAF1 kinase, 'Ser-365' of BRAF kinase and 'Ser-214' of ARAF kinase, stimulating their kinase activities . The SMP complex enhances the dephosphorylation activity and substrate specificity of PP1c .

APPLICATION

To ensure optimal assay performance, AREX recommends conducting reagent titration tailored to each testing system for optimal detection results.

WB	1:500 - 1:2000
IHC	1:50 - 1:200
IF/ICC	1:50 - 1:200

*Results are sample-specific. Please refer to your local assay conditions and test parameters for reference.

PRODUCT OVERVIEW

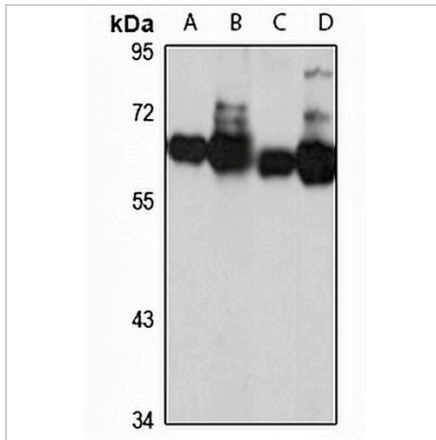
Description	Rabbit polyclonal antibody to Sur-8
Specificity	Recognizes endogenous levels of Sur-8 protein
Antibody Type	Primary antibody
Immunogen	Recombinant fusion protein of human Sur-8. The exact sequence is proprietary.
Purification	The antibody was purified by immunogen affinity chromatography.
Molecular Weight	Predicted: 59; Observed: 65 kD
Form/Buffer	Liquid in 0.42% Potassium phosphate, 0.87% Sodium chloride, pH 7.3, 30% glycerol, and 0.01% sodium azide.
Alternative Names	KIAA0862; Leucine-rich repeat protein SHOC-2; Protein soc-2 homolog; Protein sur-8 homolog
Gene Symbol	SHOC2
Entrez Gene	8036(Human); 56392(Mouse); 309548(Rat)
SwissProt	Q9UQ13(Human); O88520(Mouse); Q6AYI5(Rat)

*AREX continuously optimizes our products. Webpage content may not reflect the latest updates. For inquiries, please contact info@arexbio.com or your local distributor.

*Clone Number, Reactivity, Source/Host and Clonality can be found in the product name and Key Features section above.

DATASHEET**Sur-8 Rabbit Polyclonal Antibody**

CAT. NO. APA16840

DATA

Western blot analysis of Sur-8 expression in Jurkat (A), MCF7 (B), mouse spleen (C), rat testis (D) whole cell lysates. (Predicted band size: 59; 64 kD; Observed band size: 65 kD)

STORAGE

Store at 4°C short term. For long term storage, store at -20°C, avoiding freeze/thaw cycles.

NOTE

For Research Use Only. Not for diagnostic, therapeutics, prophylactic or in vivo use.