

DATASHEET

SIAE Rabbit Polyclonal Antibody

CAT. NO. APA16841

KEY FEATURES

Target	SIAE	Source / Host	Rabbit
Reactivity	Human, Mouse, Rat	Clonality	Polyclonal
Applications	WB	Conjugation	Unconjugated
Form / Buffer	Liquid in 0.42% Potassium phosphate, 0.87% Sodium chloride, pH 7.3, 30% glycerol, and 0.01% sodium azide.		Storage at -20°C

BACKGROUND

Catalyzes the removal of O-acetyl ester groups from position 9 of the free diacetylated sialate N-acetyl-9-O-acetylneuramate (Neu5,9Ac2) in the cytosol and of the diacetylated sialate residues of sialylglycoconjugates in the lysosomes (Probable). Together with the sialate-O-acetyltransferase they regulate the balance of acetylated sialoglycoconjugates, key players in various processes such as cell-cell interactions, host-pathogen recognition, and tumor antigenicity in the cytosol and of the diacetylated sialate residues of sialylglycoconjugates in the lysosomes (Probable).

APPLICATION

To ensure optimal assay performance, AREX recommends conducting reagent titration tailored to each testing system for optimal detection results.

WB	1:500 - 1:2000
----	----------------

*Results are sample-specific. Please refer to your local assay conditions and test parameters for reference.

PRODUCT OVERVIEW

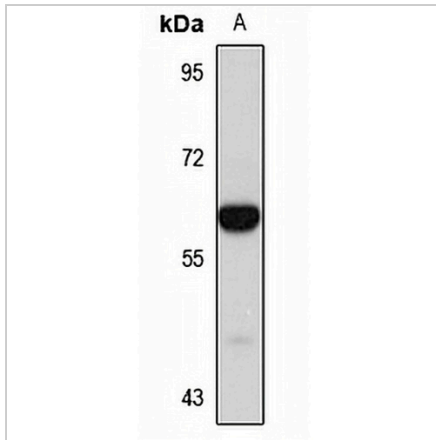
Description	Rabbit polyclonal antibody to SIAE
Specificity	Recognizes endogenous levels of SIAE protein
Antibody Type	Primary antibody
Immunogen	Recombinant fusion protein of human SIAE. The exact sequence is proprietary.
Purification	The antibody was purified by immunogen affinity chromatography.
Molecular Weight	Predicted: 54; Observed: 58 kD
Form/Buffer	Liquid in 0.42% Potassium phosphate, 0.87% Sodium chloride, pH 7.3, 30% glycerol, and 0.01% sodium azide.
Alternative Names	YSG2; Sialate O-acylesterase; H-Lse; Sialic acid-specific 9-O-acylesterase
Gene Symbol	SIAE
Entrez Gene	54414(Human); 22619(Mouse)
SwissProt	Q9HAT2(Human); P70665(Mouse); P82450(Rat)

*AREX continuously optimizes our products. Webpage content may not reflect the latest updates. For inquiries, please contact info@arexbio.com or your local distributor.

*Clone Number, Reactivity, Source/Host and Clonality can be found in the product name and Key Features section above.

DATASHEET**SIAE Rabbit Polyclonal Antibody**

CAT. NO. APA16841

DATA

Western blot analysis of SIAE expression in LO2 (A) whole cell lysates. (Predicted band size: 54; 58 kD; Observed band size: 58 kD)

STORAGE

Store at 4°C short term. For long term storage, store at -20°C, avoiding freeze/thaw cycles.

NOTE

For Research Use Only. Not for diagnostic, therapeutics, prophylactic or in vivo use.