

DATASHEET

Siglec 9 Rabbit Polyclonal Antibody

CAT. NO. APA16844

KEY FEATURES

| | | | |
|---------------|---|---------------|--------------|
| Target | Siglec 9 | Source / Host | Rabbit |
| Reactivity | Human, Mouse, Rat | Clonality | Polyclonal |
| Applications | WB | Conjugation | Unconjugated |
| Form / Buffer | Liquid in 0.42% Potassium phosphate, 0.87% Sodium chloride, pH 7.3, 30% glycerol, and 0.01% sodium azide. | Storage | at-20°C |

BACKGROUND

Putative adhesion molecule that mediates sialic-acid dependent binding to cells. Preferentially binds to alpha-2,3- or alpha-2,6-linked sialic acid. The sialic acid recognition site may be masked by cis interactions with sialic acids on the same cell surface.

APPLICATION

To ensure optimal assay performance, AREX recommends conducting reagent titration tailored to each testing system for optimal detection results.

| | |
|----|----------------|
| WB | 1:500 - 1:1000 |
|----|----------------|

*Results are sample-specific. Please refer to your local assay conditions and test parameters for reference.

PRODUCT OVERVIEW

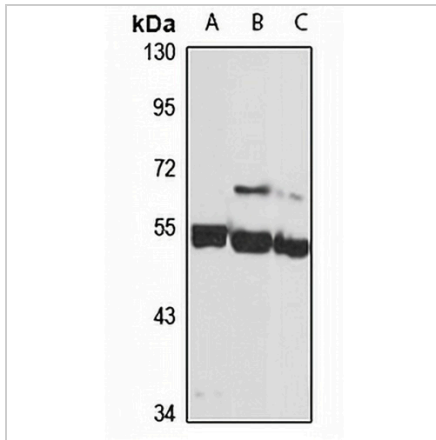
| | |
|-------------------|---|
| Description | Rabbit polyclonal antibody to Siglec 9 |
| Specificity | Recognizes endogenous levels of Siglec 9 protein |
| Antibody Type | Primary antibody |
| Immunogen | Recombinant fusion protein of human Siglec 9. The exact sequence is proprietary. |
| Purification | The antibody was purified by immunogen affinity chromatography. |
| Molecular Weight | Predicted: 50; Observed: 50 kD |
| Form/Buffer | Liquid in 0.42% Potassium phosphate, 0.87% Sodium chloride, pH 7.3, 30% glycerol, and 0.01% sodium azide. |
| Alternative Names | Sialic acid-binding Ig-like lectin 9; Siglec-9; CDw329; Protein FOAP-9; CD329 |
| Gene Symbol | SIGLEC9 |
| Entrez Gene | 27180(Human) |
| SwissProt | Q9Y336(Human) |

*AREX continuously optimizes our products. Webpage content may not reflect the latest updates. For inquiries, please contact info@arexbio.com or your local distributor.

*Clone Number, Reactivity, Source/Host and Clonality can be found in the product name and Key Features section above.

DATASHEET**Siglec 9 Rabbit Polyclonal Antibody**

CAT. NO. APA16844

DATA

Western blot analysis of Siglec 9 expression in K562 (A), mouse brain (B), rat brain (C) whole cell lysates. (Predicted band size: 50; 52 kD; Observed band size: 50 kD)

STORAGE

Store at 4°C short term. For long term storage, store at -20°C, avoiding freeze/thaw cycles.

NOTE

For Research Use Only. Not for diagnostic, therapeutics, prophylactic or in vivo use.