

DATASHEET

SIM2 Rabbit Polyclonal Antibody

CAT. NO. APA16845

KEY FEATURES

Target	SIM2	Source / Host	Rabbit
Reactivity	Human, Mouse	Clonality	Polyclonal
Applications	WB, IHC	Conjugation	Unconjugated
Form / Buffer	Liquid in 0.42% Potassium phosphate, 0.87% Sodium chloride, pH 7.3, 30% glycerol, and 0.01% sodium azide.		Storage at -20°C

BACKGROUND

Transcription factor that may be a master gene of CNS development in cooperation with Arnt. It may have pleiotropic effects in the tissues expressed during development.

APPLICATION

To ensure optimal assay performance, AREX recommends conducting reagent titration tailored to each testing system for optimal detection results.

WB	1:500 - 1:2000
IHC	1:50 - 1:200

*Results are sample-specific. Please refer to your local assay conditions and test parameters for reference.

PRODUCT OVERVIEW

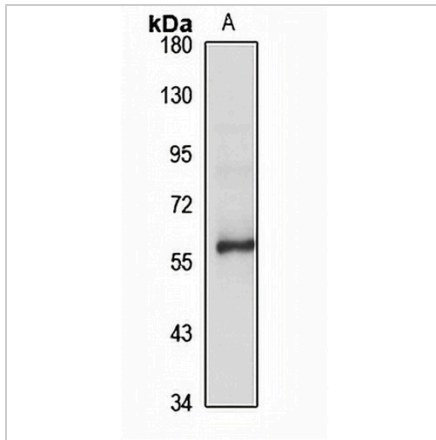
Description	Rabbit polyclonal antibody to SIM2
Specificity	Recognizes endogenous levels of SIM2 protein
Antibody Type	Primary antibody
Immunogen	Recombinant fusion protein of human SIM2. The exact sequence is proprietary.
Purification	The antibody was purified by immunogen affinity chromatography.
Molecular Weight	Predicted: 63; Observed: 56 kD
Form/Buffer	Liquid in 0.42% Potassium phosphate, 0.87% Sodium chloride, pH 7.3, 30% glycerol, and 0.01% sodium azide.
Alternative Names	BHLHE15; Single-minded homolog 2; Class E basic helix-loop-helix protein 15; bHLHe15
Gene Symbol	SIM2
Entrez Gene	6493(Human); 20465(Mouse)
SwissProt	Q14190(Human); Q61079(Mouse)

*AREX continuously optimizes our products. Webpage content may not reflect the latest updates. For inquiries, please contact info@arexbio.com or your local distributor.

*Clone Number, Reactivity, Source/Host and Clonality can be found in the product name and Key Features section above.

DATASHEET**SIM2 Rabbit Polyclonal Antibody**

CAT. NO. APA16845

DATA

Western blot analysis of SIM2 expression in HepG2 (A) whole cell lysates. (Predicted band size: 63; 73 kD; Observed band size: 56 kD)

STORAGE

Store at 4°C short term. For long term storage, store at -20°C, avoiding freeze/thaw cycles.

NOTE

For Research Use Only. Not for diagnostic, therapeutics, prophylactic or in vivo use.