

DATASHEET

SKAP2 Rabbit Polyclonal Antibody

CAT. NO. APA16849

KEY FEATURES

Target	SKAP2	Source / Host	Rabbit
Reactivity	Human	Clonality	Polyclonal
Applications	WB	Conjugation	Unconjugated
Form / Buffer	Liquid in 0.42% Potassium phosphate, 0.87% Sodium chloride, pH 7.3, 30% glycerol, and 0.01% sodium azide.		Storage at -20°C

BACKGROUND

May be involved in B-cell and macrophage adhesion processes. In B-cells, may act by coupling the B-cell receptor (BCR) to integrin activation. May play a role in src signaling pathway.

APPLICATION

To ensure optimal assay performance, AREX recommends conducting reagent titration tailored to each testing system for optimal detection results.

WB	1:500 - 1:1000
----	----------------

*Results are sample-specific. Please refer to your local assay conditions and test parameters for reference.

PRODUCT OVERVIEW

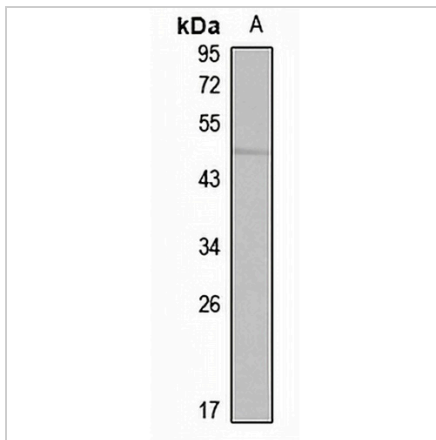
Description	Rabbit polyclonal antibody to SKAP2
Specificity	Recognizes endogenous levels of SKAP2 protein
Antibody Type	Primary antibody
Immunogen	Recombinant fusion protein of human SKAP2. The exact sequence is proprietary.
Purification	The antibody was purified by immunogen affinity chromatography.
Molecular Weight	Predicted: 41 kD; Observed: 50 kD
Form/Buffer	Liquid in 0.42% Potassium phosphate, 0.87% Sodium chloride, pH 7.3, 30% glycerol, and 0.01% sodium azide.
Alternative Names	PRAP; RA70; SAPS; SCAP2; SKAP55R; Src kinase-associated phosphoprotein 2; Pyk2/RAFTK-associated protein; Retinoic acid-induced protein 70; SKAP55 homolog; SKAP-55HOM; SKAP-HOM; Src family-associated phosphoprotein 2; Src kinase-associated phosphoprotein 55-related protein; Src-associated adapter protein with PH and SH3 domains
Gene Symbol	SKAP2
Entrez Gene	8935(Human); 54353(Mouse); 155183(Rat)
SwissProt	O75563(Human); Q3UND0(Mouse); Q920G0(Rat)

*AREX continuously optimizes our products. Webpage content may not reflect the latest updates. For inquiries, please contact info@arexbio.com or your local distributor.

*Clone Number, Reactivity, Source/Host and Clonality can be found in the product name and Key Features section above.

DATASHEET**SKAP2 Rabbit Polyclonal Antibody**

CAT. NO. APA16849

DATA

Western blot analysis of SKAP2 expression in mouse lung (A) whole cell lysates. (Predicted band size: 41 kD; Observed band size: 50 kD)

STORAGE

Store at 4°C short term. For long term storage, store at -20°C, avoiding freeze/thaw cycles.

NOTE

For Research Use Only. Not for diagnostic, therapeutics, prophylactic or in vivo use.