

DATASHEET

CD352 Rabbit Polyclonal Antibody

CAT. NO. APA16852

KEY FEATURES

| | | | |
|---------------|---|---------------|--------------|
| Target | CD352 | Source / Host | Rabbit |
| Reactivity | Human, Mouse, Rat | Clonality | Polyclonal |
| Applications | WB | Conjugation | Unconjugated |
| Form / Buffer | Liquid in 0.42% Potassium phosphate, 0.87% Sodium chloride, pH 7.3, 30% glycerol, and 0.01% sodium azide. | Storage | at-20°C |

BACKGROUND

Self-ligand receptor of the signaling lymphocytic activation molecule (SLAM) family. SLAM receptors triggered by homo- or heterotypic cell-cell interactions are modulating the activation and differentiation of a wide variety of immune cells and thus are involved in the regulation and interconnection of both innate and adaptive immune response. Activities are controlled by presence or absence of small cytoplasmic adapter proteins, SH2D1A/SAP and/or SH2D1B/EAT-2. Triggers cytolytic activity only in natural killer cells (NK) expressing high surface densities of natural cytotoxicity receptors family.

APPLICATION

To ensure optimal assay performance, AREX recommends conducting reagent titration tailored to each testing system for optimal detection results.

| | |
|----|----------------|
| WB | 1:500 - 1:2000 |
|----|----------------|

*Results are sample-specific. Please refer to your local assay conditions and test parameters for reference.

PRODUCT OVERVIEW

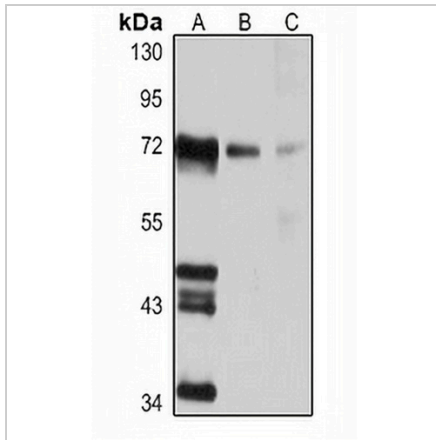
| | |
|-------------------|---|
| Description | Rabbit polyclonal antibody to CD352 |
| Specificity | Recognizes endogenous levels of CD352 protein |
| Antibody Type | Primary antibody |
| Immunogen | Recombinant fusion protein of human CD352. The exact sequence is proprietary. |
| Purification | The antibody was purified by immunogen affinity chromatography. |
| Molecular Weight | Predicted: 24; Observed: 70 kD |
| Form/Buffer | Liquid in 0.42% Potassium phosphate, 0.87% Sodium chloride, pH 7.3, 30% glycerol, and 0.01% sodium azide. |
| Alternative Names | KALI; SLAM family member 6; Activating NK receptor; NK-T-B-antigen; NTB-A; CD352 |
| Gene Symbol | SLAMF6 |
| Entrez Gene | 114836(Human); 30925(Mouse) |
| SwissProt | Q96DU3(Human); Q9ET39(Mouse) |

*AREX continuously optimizes our products. Webpage content may not reflect the latest updates. For inquiries, please contact info@arexbio.com or your local distributor.

*Clone Number, Reactivity, Source/Host and Clonality can be found in the product name and Key Features section above.

DATASHEET**CD352 Rabbit Polyclonal Antibody**

CAT. NO. APA16852

DATA

Western blot analysis of CD352 expression in Jurkat (A), mouse spleen (B), rat liver (C) whole cell lysates. (Predicted band size: 24; 37 kD; Observed band size: 70 kD)

STORAGE

Store at 4°C short term. For long term storage, store at -20°C, avoiding freeze/thaw cycles.

NOTE

For Research Use Only. Not for diagnostic, therapeutics, prophylactic or in vivo use.