

DATASHEET

SLC12A1 Rabbit Polyclonal Antibody

CAT. NO. APA16855

KEY FEATURES

Target	SLC12A1	Source / Host	Rabbit
Reactivity	Human, Mouse, Rat	Clonality	Polyclonal
Applications	WB	Conjugation	Unconjugated
Form / Buffer	Liquid in 0.42% Potassium phosphate, 0.87% Sodium chloride, pH 7.3, 30% glycerol, and 0.01% sodium azide.		Storage at-20°C

BACKGROUND

Renal sodium, potassium and chloride non-electrogenic ion symporter that mediates the transepithelial NaCl reabsorption in the thick ascending limb and plays an essential role in the urinary concentration and volume regulation . It can substitute NH4(+) for K(+), enabling NH4(+) apical transmembrane transport in the medullary thick ascending limb (MTAL). This function is crucial for maintaining ammonium homeostasis by the kidney, particularly during metabolic acidosis .

APPLICATION

To ensure optimal assay performance, AREX recommends conducting reagent titration tailored to each testing system for optimal detection results.

WB	1:500 - 1:2000
----	----------------

*Results are sample-specific. Please refer to your local assay conditions and test parameters for reference.

PRODUCT OVERVIEW

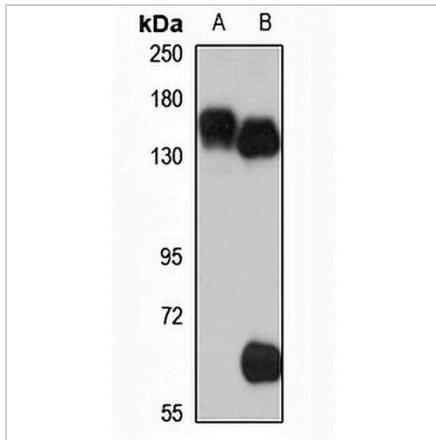
Description	Rabbit polyclonal antibody to SLC12A1
Specificity	Recognizes endogenous levels of SLC12A1 protein
Antibody Type	Primary antibody
Immunogen	KLH-conjugated synthetic peptide of human SLC12A1. The exact sequence is proprietary.
Purification	The antibody was purified by immunogen affinity chromatography.
Molecular Weight	Predicted: 121 kD; Observed: 150 kD
Form/Buffer	Liquid in 0.42% Potassium phosphate, 0.87% Sodium chloride, pH 7.3, 30% glycerol, and 0.01% sodium azide.
Alternative Names	NKCC2; Solute carrier family 12 member 1; Bumetanide-sensitive sodium-(potassium)-chloride cotransporter 2; Kidney-specific Na-K-Cl symporter
Gene Symbol	SLC12A1
Entrez Gene	6557(Human); 20495(Mouse)
SwissProt	Q13621(Human); P55014(Mouse); P55016(Rat)

*AREX continuously optimizes our products. Webpage content may not reflect the latest updates. For inquiries, please contact info@arexbio.com or your local distributor.

*Clone Number, Reactivity, Source/Host and Clonality can be found in the product name and Key Features section above.

DATASHEET**SLC12A1 Rabbit Polyclonal Antibody**

CAT. NO. APA16855

DATA

Western blot analysis of SLC12A1 expression in mouse kidney (A), rat kidney (B) whole cell lysates. (Predicted band size: 121 kD; Observed band size: 150 kD)

STORAGE

Store at 4°C short term. For long term storage, store at -20°C, avoiding freeze/thaw cycles.

NOTE

For Research Use Only. Not for diagnostic, therapeutics, prophylactic or in vivo use.