

DATASHEET

NKCC1 Rabbit Polyclonal Antibody

CAT. NO. APA16856

KEY FEATURES

Target	NKCC1	Source / Host	Rabbit
Reactivity	Human, Mouse, Rat	Clonality	Polyclonal
Applications	WB	Conjugation	Unconjugated
Form / Buffer	Liquid in 0.42% Potassium phosphate, 0.87% Sodium chloride, pH 7.3, 30% glycerol, and 0.01% sodium azide.		Storage at-20°C

BACKGROUND

Cation-chloride cotransporter which mediates the electroneutral transport of chloride, potassium and/or sodium ions across the membrane . Plays a vital role in the regulation of ionic balance and cell volume .

APPLICATION

To ensure optimal assay performance, AREX recommends conducting reagent titration tailored to each testing system for optimal detection results.

WB	1:500 - 1:2000
----	----------------

*Results are sample-specific. Please refer to your local assay conditions and test parameters for reference.

PRODUCT OVERVIEW

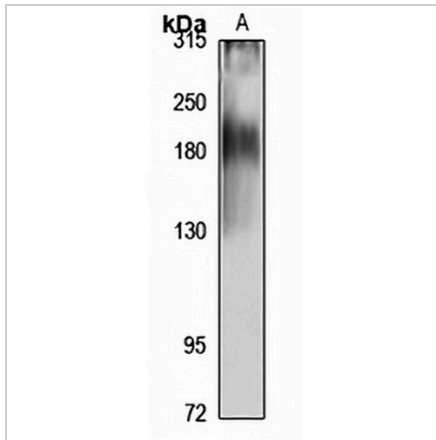
Description	Rabbit polyclonal antibody to NKCC1
Specificity	Recognizes endogenous levels of NKCC1 protein
Antibody Type	Primary antibody
Immunogen	Recombinant fusion protein of human NKCC1. The exact sequence is proprietary.
Purification	The antibody was purified by immunogen affinity chromatography.
Molecular Weight	Predicted: 129; Observed: 160-200 kD
Form/Buffer	Liquid in 0.42% Potassium phosphate, 0.87% Sodium chloride, pH 7.3, 30% glycerol, and 0.01% sodium azide.
Alternative Names	NKCC1; Solute carrier family 12 member 2; Basolateral Na-K-Cl symporter; Bumetanide-sensitive sodium-(potassium)-chloride cotransporter 1
Gene Symbol	SLC12A2
Entrez Gene	6558(Human); 20496(Mouse)
SwissProt	P55011(Human); P55012(Mouse)

*AREX continuously optimizes our products. Webpage content may not reflect the latest updates. For inquiries, please contact info@arexbio.com or your local distributor.

*Clone Number, Reactivity, Source/Host and Clonality can be found in the product name and Key Features section above.

DATASHEET**NKCC1 Rabbit Polyclonal Antibody**

CAT. NO. APA16856

DATA

Western blot analysis of NKCC1 expression in rat brain (A) whole cell lysates. (Predicted band size: 129; 131 kD; Observed band size: 160-200 kD)

STORAGE

Store at 4°C short term. For long term storage, store at -20°C, avoiding freeze/thaw cycles.

NOTE

For Research Use Only. Not for diagnostic, therapeutics, prophylactic or in vivo use.