

**DATASHEET**

**SLC12A5 Rabbit Polyclonal Antibody**

CAT. NO. APA16857

**KEY FEATURES**

Target	SLC12A5	Source / Host	Rabbit
Reactivity	Human	Clonality	Polyclonal
Applications	WB	Conjugation	Unconjugated
Form / Buffer	Liquid in 0.42% Potassium phosphate, 0.87% Sodium chloride, pH 7.3, 30% glycerol, and 0.01% sodium azide.		Storage at -20°C

**BACKGROUND**

Mediates electroneutral potassium-chloride cotransport in mature neurons and is required for neuronal Cl(-) homeostasis . As major extruder of intracellular chloride, it establishes the low neuronal Cl(-) levels required for chloride influx after binding of GABA-A and glycine to their receptors, with subsequent hyperpolarization and neuronal inhibition . Involved in the regulation of dendritic spine formation and maturation .

**APPLICATION**

To ensure optimal assay performance, AREX recommends conducting reagent titration tailored to each testing system for optimal detection results.

WB	1:500 - 1:2000
----	----------------

\*Results are sample-specific. Please refer to your local assay conditions and test parameters for reference.

**PRODUCT OVERVIEW**

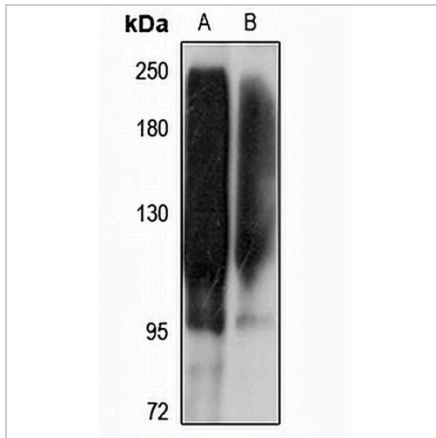
Description	Rabbit polyclonal antibody to SLC12A5
Specificity	Recognizes endogenous levels of SLC12A5 protein
Antibody Type	Primary antibody
Immunogen	Recombinant fusion protein of human SLC12A5. The exact sequence is proprietary.
Purification	The antibody was purified by immunogen affinity chromatography.
Molecular Weight	Predicted: 126 kD; Observed: 110-260 kD
Form/Buffer	Liquid in 0.42% Potassium phosphate, 0.87% Sodium chloride, pH 7.3, 30% glycerol, and 0.01% sodium azide.
Alternative Names	KCC2; KIAA1176; Solute carrier family 12 member 5; Electroneutral potassium-chloride cotransporter 2; K-Cl cotransporter 2; hKCC2; Neuronal K-Cl cotransporter
Gene Symbol	SLC12A5
Entrez Gene	57468(Human); 57138(Mouse); 171373(Rat)
SwissProt	Q9H2X9(Human); Q91V14(Mouse); Q63633(Rat)

\*AREX continuously optimizes our products. Webpage content may not reflect the latest updates. For inquiries, please contact [info@arexbio.com](mailto:info@arexbio.com) or your local distributor.

\*Clone Number, Reactivity, Source/Host and Clonality can be found in the product name and Key Features section above.

**DATASHEET****SLC12A5 Rabbit Polyclonal Antibody**

CAT. NO. APA16857

**DATA**

Western blot analysis of SLC12A5 expression in mouse brain (A), rat brain (B) whole cell lysates. (Predicted band size: 126 kD; Observed band size: 110-260 kD)

**STORAGE**

Store at 4°C short term. For long term storage, store at -20°C, avoiding freeze/thaw cycles.

**NOTE**

For Research Use Only. Not for diagnostic, therapeutics, prophylactic or in vivo use.