

DATASHEET

SLC13A3 Rabbit Polyclonal Antibody

CAT. NO. APA16858

KEY FEATURES

| | | | |
|---------------|---|---------------|---------------------|
| Target | SLC13A3 | Source / Host | Rabbit |
| Reactivity | Human, Mouse, Rat | Clonality | Polyclonal |
| Applications | WB | Conjugation | Unconjugated |
| Form / Buffer | Liquid in 0.42% Potassium phosphate, 0.87% Sodium chloride, pH 7.3, 30% glycerol, and 0.01% sodium azide. | | Storage at -20°C |

BACKGROUND

High-affinity sodium-dicarboxylate cotransporter that accepts a range of substrates with 4-6 carbon atoms, such as the citric acid cycle intermediates succinate and alpha-ketoglutarate (2-oxoglutarate), as well as other compounds including N-acetyl-L-aspartate, as well as other compounds including N-acetyl-L-aspartate. Transports the dicarboxylate into the cell with a probable stoichiometry of 3 Na(+) for 1 divalent dicarboxylate, rendering the process electrogenic. Can transport citrate in a Na(+)-dependent manner, recognizing the divalent form of citrate rather than the trivalent form which is normally found in blood. Imports itaconate in hepatocytes leading to activation of TFEB-dependent lysosomal biogenesis involved in antibacterial innate immune response.

APPLICATION

To ensure optimal assay performance, AREX recommends conducting reagent titration tailored to each testing system for optimal detection results.

| | |
|----|----------------|
| WB | 1:500 - 1:2000 |
|----|----------------|

*Results are sample-specific. Please refer to your local assay conditions and test parameters for reference.

PRODUCT OVERVIEW

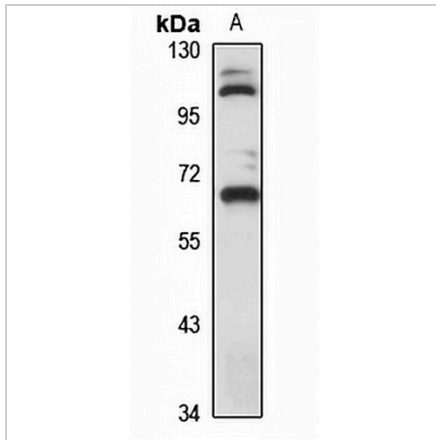
| | |
|-------------------|--|
| Description | Rabbit polyclonal antibody to SLC13A3 |
| Specificity | Recognizes endogenous levels of SLC13A3 protein |
| Antibody Type | Primary antibody |
| Immunogen | Recombinant fusion protein of human SLC13A3. The exact sequence is proprietary. |
| Purification | The antibody was purified by immunogen affinity chromatography. |
| Molecular Weight | Predicted: 25; Observed: 65 kD |
| Form/Buffer | Liquid in 0.42% Potassium phosphate, 0.87% Sodium chloride, pH 7.3, 30% glycerol, and 0.01% sodium azide. |
| Alternative Names | NADC3; SDCT2; Solute carrier family 13 member 3; Na(+)/dicarboxylate cotransporter 3; NaDC-3; hNaDC3; Sodium-dependent high-affinity dicarboxylate transporter 2 |
| Gene Symbol | SLC13A3 |
| Entrez Gene | 64849(Human); 114644(Mouse) |
| SwissProt | Q8WWT9(Human); Q91Y63(Mouse); Q9Z0Z5(Rat) |

*AREX continuously optimizes our products. Webpage content may not reflect the latest updates. For inquiries, please contact info@arex.bio or your local distributor.

*Clone Number, Reactivity, Source/Host and Clonality can be found in the product name and Key Features section above.

DATASHEET**SLC13A3 Rabbit Polyclonal Antibody**

CAT. NO. APA16858

DATA

Western blot analysis of SLC13A3 expression in HEK293T (A) whole cell lysates. (Predicted band size: 25; 37; 57; 61; 66 kD; Observed band size: 65 kD)

STORAGE

Store at 4°C short term. For long term storage, store at -20°C, avoiding freeze/thaw cycles.

NOTE

For Research Use Only. Not for diagnostic, therapeutics, prophylactic or in vivo use.