

**DATASHEET**

**SLC13A4 Rabbit Polyclonal Antibody**

CAT. NO. APA16859

**KEY FEATURES**

Target	SLC13A4	Source / Host	Rabbit
Reactivity	Human, Mouse, Rat	Clonality	Polyclonal
Applications	WB	Conjugation	Unconjugated
Form / Buffer	Liquid in 0.42% Potassium phosphate, 0.87% Sodium chloride, pH 7.3, 30% glycerol, and 0.01% sodium azide.		Storage at -20°C

**BACKGROUND**

Sodium:sulfate symporter that mediates sulfate reabsorption in the high endothelial venules (HEV).

**APPLICATION**

To ensure optimal assay performance, AREX recommends conducting reagent titration tailored to each testing system for optimal detection results.

WB	1:500 - 1:2000
----	----------------

\*Results are sample-specific. Please refer to your local assay conditions and test parameters for reference.

**PRODUCT OVERVIEW**

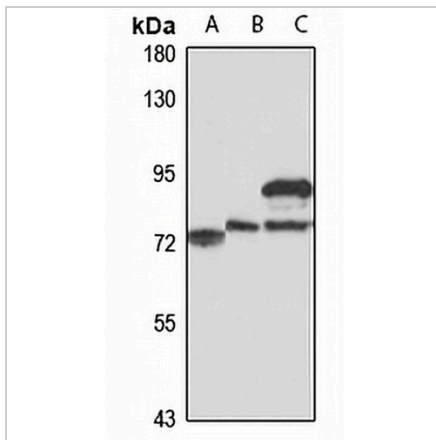
Description	Rabbit polyclonal antibody to SLC13A4
Specificity	Recognizes endogenous levels of SLC13A4 protein
Antibody Type	Primary antibody
Immunogen	Recombinant fusion protein of human SLC13A4. The exact sequence is proprietary.
Purification	The antibody was purified by immunogen affinity chromatography.
Molecular Weight	Predicted: 69 kD; Observed: 73 kD
Form/Buffer	Liquid in 0.42% Potassium phosphate, 0.87% Sodium chloride, pH 7.3, 30% glycerol, and 0.01% sodium azide.
Alternative Names	SUT1; Solute carrier family 13 member 4; Na(+)/sulfate cotransporter SUT-1; NaS2
Gene Symbol	SLC13A4
Entrez Gene	26266(Human)
SwissProt	Q9UKG4(Human)

\*AREX continuously optimizes our products. Webpage content may not reflect the latest updates. For inquiries, please contact [info@arexbio.com](mailto:info@arexbio.com) or your local distributor.

\*Clone Number, Reactivity, Source/Host and Clonality can be found in the product name and Key Features section above.

**DATASHEET****SLC13A4 Rabbit Polyclonal Antibody**

CAT. NO. APA16859

**DATA**

Western blot analysis of SLC13A4 expression in HEK293T (A), mouse liver (B), rat brain (C) whole cell lysates. (Predicted band size: 69 kD; Observed band size: 73 kD)

**STORAGE**

Store at 4°C short term. For long term storage, store at -20°C, avoiding freeze/thaw cycles.

**NOTE**

For Research Use Only. Not for diagnostic, therapeutics, prophylactic or in vivo use.