

DATASHEET

SLC14A2 Rabbit Polyclonal Antibody

CAT. NO. APA16861

KEY FEATURES

Target	SLC14A2	Source / Host	Rabbit
Reactivity	Human, Mouse, Rat	Clonality	Polyclonal
Applications	WB	Conjugation	Unconjugated
Form / Buffer	Liquid in 0.42% Potassium phosphate, 0.87% Sodium chloride, pH 7.3, 30% glycerol, and 0.01% sodium azide.		Storage at -20°C

BACKGROUND

Mediates the transport of urea driven by a concentration gradient across the cell membrane of the renal inner medullary collecting duct which is critical to the urinary concentrating mechanism.

APPLICATION

To ensure optimal assay performance, AREX recommends conducting reagent titration tailored to each testing system for optimal detection results.

WB	1:500 - 1:2000
----	----------------

*Results are sample-specific. Please refer to your local assay conditions and test parameters for reference.

PRODUCT OVERVIEW

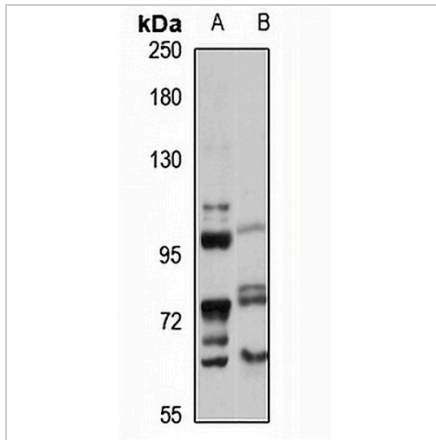
Description	Rabbit polyclonal antibody to SLC14A2
Specificity	Recognizes endogenous levels of SLC14A2 protein
Antibody Type	Primary antibody
Immunogen	Recombinant fusion protein of human SLC14A2. The exact sequence is proprietary.
Purification	The antibody was purified by immunogen affinity chromatography.
Molecular Weight	Predicted: 43; Observed: 101 kD
Form/Buffer	Liquid in 0.42% Potassium phosphate, 0.87% Sodium chloride, pH 7.3, 30% glycerol, and 0.01% sodium azide.
Alternative Names	HUT2; UT2; Urea transporter 2; Solute carrier family 14 member 2; Urea transporter kidney
Gene Symbol	SLC14A2
Entrez Gene	8170(Human); 27411(Mouse); 54302(Rat)
SwissProt	Q15849(Human); Q8R4T9(Mouse); Q62668(Rat)

*AREX continuously optimizes our products. Webpage content may not reflect the latest updates. For inquiries, please contact info@arexbio.com or your local distributor.

*Clone Number, Reactivity, Source/Host and Clonality can be found in the product name and Key Features section above.

DATASHEET**SLC14A2 Rabbit Polyclonal Antibody**

CAT. NO. APA16861

DATA

Western blot analysis of SLC14A2 expression in K562 (A), mouse brain (B) whole cell lysates. (Predicted band size: 43; 101 kD; Observed band size: 101 kD)

STORAGE

Store at 4°C short term. For long term storage, store at -20°C, avoiding freeze/thaw cycles.

NOTE

For Research Use Only. Not for diagnostic, therapeutics, prophylactic or in vivo use.