

DATASHEET

SLC16A10 Rabbit Polyclonal Antibody

CAT. NO. APA16863

KEY FEATURES

Target	SLC16A10	Source / Host	Rabbit
Reactivity	Human	Clonality	Polyclonal
Applications	WB	Conjugation	Unconjugated
Form / Buffer	Liquid in 0.42% Potassium phosphate, 0.87% Sodium chloride, pH 7.3, 30% glycerol, and 0.01% sodium azide.		Storage at -20°C

BACKGROUND

Sodium- and proton-independent thyroid hormones and aromatic acids transporter . Mediates both uptake and efflux of 3,5,3'-triiodothyronine (T3) and 3,5,3',5'-tetraiodothyronine (T4) with high affinity, suggesting a role in the homeostasis of thyroid hormone levels . Responsible for low affinity bidirectional transport of the aromatic amino acids, such as phenylalanine, tyrosine, tryptophan and L-3,4-dihydroxyphenylalanine (L-dopa) . Plays an important role in homeostasis of aromatic amino acids .

APPLICATION

To ensure optimal assay performance, AREX recommends conducting reagent titration tailored to each testing system for optimal detection results.

WB	1:500 - 1:2000
----	----------------

*Results are sample-specific. Please refer to your local assay conditions and test parameters for reference.

PRODUCT OVERVIEW

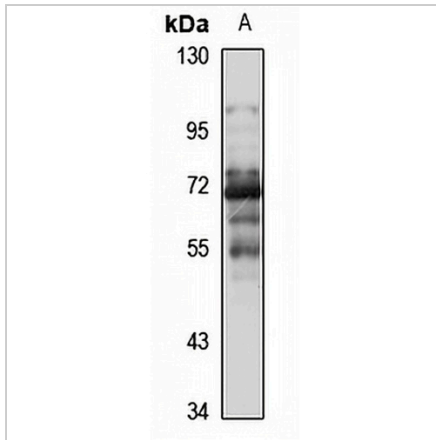
Description	Rabbit polyclonal antibody to SLC16A10
Specificity	Recognizes endogenous levels of SLC16A10 protein
Antibody Type	Primary antibody
Immunogen	Recombinant fusion protein of human SLC16A10. The exact sequence is proprietary.
Purification	The antibody was purified by immunogen affinity chromatography.
Molecular Weight	Predicted: 55 kD; Observed: 55 kD
Form/Buffer	Liquid in 0.42% Potassium phosphate, 0.87% Sodium chloride, pH 7.3, 30% glycerol, and 0.01% sodium azide.
Alternative Names	MCT10; TAT1; Monocarboxylate transporter 10; MCT 10; Aromatic amino acid transporter 1; Solute carrier family 16 member 10; T-type amino acid transporter 1
Gene Symbol	SLC16A10
Entrez Gene	117247(Human)
SwissProt	Q8TF71(Human)

*AREX continuously optimizes our products. Webpage content may not reflect the latest updates. For inquiries, please contact info@arexbio.com or your local distributor.

*Clone Number, Reactivity, Source/Host and Clonality can be found in the product name and Key Features section above.

DATASHEET**SLC16A10 Rabbit Polyclonal Antibody**

CAT. NO. APA16863

DATA

Western blot analysis of SLC16A10 expression in K562 (A) whole cell lysates. (Predicted band size: 55 kD; Observed band size: 55 kD)

STORAGE

Store at 4°C short term. For long term storage, store at -20°C, avoiding freeze/thaw cycles.

NOTE

For Research Use Only. Not for diagnostic, therapeutics, prophylactic or in vivo use.