

DATASHEET

VGLUT2 Rabbit Polyclonal Antibody

CAT. NO. APA16865

KEY FEATURES

Target	VGLUT2	Source / Host	Rabbit
Reactivity	Human, Mouse, Rat	Clonality	Polyclonal
Applications	WB, IF/ICC	Conjugation	Unconjugated
Form / Buffer	Liquid in 0.42% Potassium phosphate, 0.87% Sodium chloride, pH 7.3, 30% glycerol, and 0.01% sodium azide.		Storage at-20°C

BACKGROUND

Multifunctional transporter that transports L-glutamate as well as multiple ions such as chloride, proton, potassium, sodium and phosphate . At the synaptic vesicle membrane, mainly functions as a uniporter which transports preferentially L-glutamate but also, phosphate from the cytoplasm into synaptic vesicles at presynaptic nerve terminals of excitatory neural cells . The L-glutamate or phosphate uniporter activity is electrogenic and is driven by the proton electrochemical gradient, mainly by the electrical gradient established by the vacuolar H(+)-ATPase across the synaptic vesicle membrane .

APPLICATION

To ensure optimal assay performance, AREX recommends conducting reagent titration tailored to each testing system for optimal detection results.

WB	1:500 - 1:2000
IF/ICC	1:50 - 1:200

*Results are sample-specific. Please refer to your local assay conditions and test parameters for reference.

PRODUCT OVERVIEW

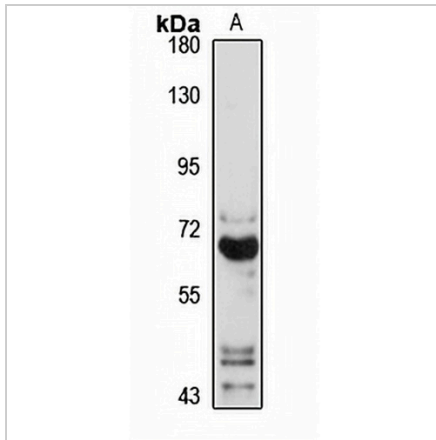
Description	Rabbit polyclonal antibody to VGLUT2
Specificity	Recognizes endogenous levels of VGLUT2 protein
Antibody Type	Primary antibody
Immunogen	KLH-conjugated synthetic peptide of human VGLUT2. The exact sequence is proprietary.
Purification	The antibody was purified by immunogen affinity chromatography.
Molecular Weight	Predicted: 64 kD; Observed: 64 kD
Form/Buffer	Liquid in 0.42% Potassium phosphate, 0.87% Sodium chloride, pH 7.3, 30% glycerol, and 0.01% sodium azide.
Alternative Names	DNPI; VGLUT2; Vesicular glutamate transporter 2; VGluT2; Differentiation-associated BNPI; Differentiation-associated Na(+)-dependent inorganic phosphate cotransporter; Solute carrier family 17 member 6
Gene Symbol	SLC17A6
Entrez Gene	57084(Human); 140919(Mouse); 84487(Rat)
SwissProt	Q9P2U8(Human); Q8BLE7(Mouse); Q9JI12(Rat)

*AREX continuously optimizes our products. Webpage content may not reflect the latest updates. For inquiries, please contact info@arexbio.com or your local distributor.

*Clone Number, Reactivity, Source/Host and Clonality can be found in the product name and Key Features section above.

DATASHEET**VGLUT2 Rabbit Polyclonal Antibody**

CAT. NO. APA16865

DATA

Western blot analysis of VGLUT2 expression in SHSY5Y (A) whole cell lysates. (Predicted band size: 64 kD; Observed band size: 64 kD)

 Data 2

Immunofluorescent analysis of VGLUT2 staining in rat brain. The tissue was washed with PBST and incubated with a Alexa Fluor 594-conjugated secondary antibody (red) in PBS at room temperature in the dark. DAPI was used to stain the cell nuclei (blue).

STORAGE

Store at 4°C short term. For long term storage, store at -20°C, avoiding freeze/thaw cycles.

NOTE

For Research Use Only. Not for diagnostic, therapeutics, prophylactic or in vivo use.