

DATASHEET

SLC17A7 Rabbit Polyclonal Antibody

CAT. NO. APA16866

KEY FEATURES

Target	SLC17A7	Source / Host	Rabbit
Reactivity	Human, Mouse, Rat	Clonality	Polyclonal
Applications	WB	Conjugation	Unconjugated
Form / Buffer	Liquid in 0.42% Potassium phosphate, 0.87% Sodium chloride, pH 7.3, 30% glycerol, and 0.01% sodium azide.		Storage at -20°C

BACKGROUND

Multifunctional transporter that transports L-glutamate as well as multiple ions such as chloride, proton, potassium, sodium and phosphate. At the synaptic vesicle membrane, mainly functions as a uniporter which transports preferentially L-glutamate but also phosphate from the cytoplasm into synaptic vesicles at presynaptic nerve terminals of excitatory neural cells. The L-glutamate or phosphate uniporter activity is electrogenic and is driven by the proton electrochemical gradient, mainly by the electrical gradient established by the vacuolar H(+)-ATPase across the synaptic vesicle membrane.

APPLICATION

To ensure optimal assay performance, AREX recommends conducting reagent titration tailored to each testing system for optimal detection results.

WB	1:500 - 1:2000
----	----------------

*Results are sample-specific. Please refer to your local assay conditions and test parameters for reference.

PRODUCT OVERVIEW

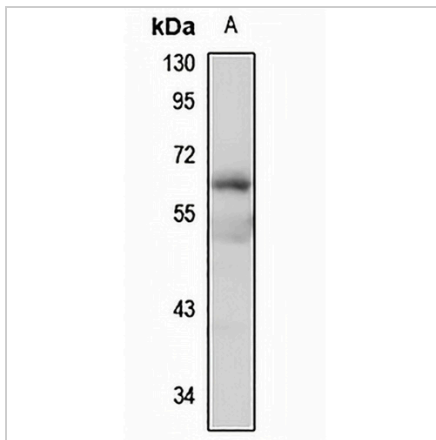
Description	Rabbit polyclonal antibody to SLC17A7
Specificity	Recognizes endogenous levels of SLC17A7 protein
Antibody Type	Primary antibody
Immunogen	Recombinant fusion protein of human SLC17A7. The exact sequence is proprietary.
Purification	The antibody was purified by immunogen affinity chromatography.
Molecular Weight	Predicted: 53; Observed: 62 kD
Form/Buffer	Liquid in 0.42% Potassium phosphate, 0.87% Sodium chloride, pH 7.3, 30% glycerol, and 0.01% sodium azide.
Alternative Names	BNPI; VGLUT1; Vesicular glutamate transporter 1; VGluT1; Brain-specific Na(+)-dependent inorganic phosphate cotransporter; Solute carrier family 17 member 7
Gene Symbol	SLC17A7
Entrez Gene	57030(Human); 72961(Mouse); 116638(Rat)
SwissProt	Q9P2U7(Human); Q3TXX4(Mouse); Q62634(Rat)

*AREX continuously optimizes our products. Webpage content may not reflect the latest updates. For inquiries, please contact info@arexbio.com or your local distributor.

*Clone Number, Reactivity, Source/Host and Clonality can be found in the product name and Key Features section above.

DATASHEET**SLC17A7 Rabbit Polyclonal Antibody**

CAT. NO. APA16866

DATA

Western blot analysis of SLC17A7 expression in SHSY5Y (A) whole cell lysates. (Predicted band size: 53; 59; 61 kD; Observed band size: 62 kD)

STORAGE

Store at 4°C short term. For long term storage, store at -20°C, avoiding freeze/thaw cycles.

NOTE

For Research Use Only. Not for diagnostic, therapeutics, prophylactic or in vivo use.