

**DATASHEET**

**SLC22A15 Rabbit Polyclonal Antibody**

CAT. NO. APA16870

**KEY FEATURES**

Target	SLC22A15	Source / Host	Rabbit
Reactivity	Human	Clonality	Polyclonal
Applications	WB	Conjugation	Unconjugated
Form / Buffer	Liquid in 0.42% Potassium phosphate, 0.87% Sodium chloride, pH 7.3, 30% glycerol, and 0.01% sodium azide.		Storage at-20°C

**BACKGROUND**

Organic zwitterion/cation transporter with apparent specificity for amino acids and their derivatives. Has low affinity for its substrates and may regulate their flux across the plasma membrane at high substrate concentrations . Bidirectionally transports carnitine and acetylcarnitine, possibly regulating their cytosolic abundance and further fatty acid catabolism via beta oxidation . Displays high transport activity toward zwitterionic substrates such as glycine betaine and diet-derived ergothioneine and carnosine. Can transport cations having an indole skeleton such as thiamine with lower efficiency. Does not transport agmatine . The transport mechanism, symport with sodium or facilitated diffusion allosterically regulated by sodium, remains to be elucidated (Probable).

**APPLICATION**

To ensure optimal assay performance, AREX recommends conducting reagent titration tailored to each testing system for optimal detection results.

WB	1:500 - 1:2000
----	----------------

\*Results are sample-specific. Please refer to your local assay conditions and test parameters for reference.

**PRODUCT OVERVIEW**

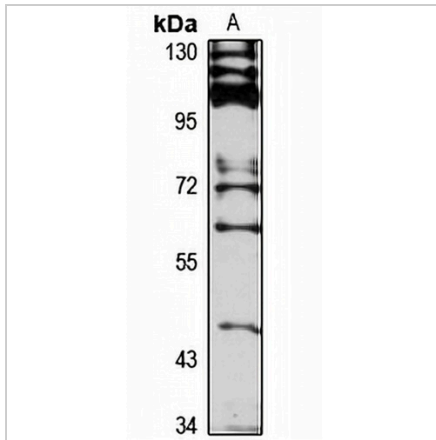
Description	Rabbit polyclonal antibody to SLC22A15
Specificity	Recognizes endogenous levels of SLC22A15 protein
Antibody Type	Primary antibody
Immunogen	Recombinant fusion protein of human SLC22A15. The exact sequence is proprietary.
Purification	The antibody was purified by immunogen affinity chromatography.
Molecular Weight	Predicted: 26; Observed: 60 kD
Form/Buffer	Liquid in 0.42% Potassium phosphate, 0.87% Sodium chloride, pH 7.3, 30% glycerol, and 0.01% sodium azide.
Alternative Names	FLIPT1; Solute carrier family 22 member 15; Fly-like putative transporter 1; Flipt 1
Gene Symbol	SLC22A15
Entrez Gene	55356(Human)
SwissProt	Q8IZD6(Human)

\*AREX continuously optimizes our products. Webpage content may not reflect the latest updates. For inquiries, please contact [info@arexbio.com](mailto:info@arexbio.com) or your local distributor.

\*Clone Number, Reactivity, Source/Host and Clonality can be found in the product name and Key Features section above.

**DATASHEET****SLC22A15 Rabbit Polyclonal Antibody**

CAT. NO. APA16870

**DATA**

Western blot analysis of SLC22A15 expression in LO2 (A) whole cell lysates. (Predicted band size: 26; 60 kD; Observed band size: 60 kD)

**STORAGE**

Store at 4°C short term. For long term storage, store at -20°C, avoiding freeze/thaw cycles.

**NOTE**

For Research Use Only. Not for diagnostic, therapeutics, prophylactic or in vivo use.