

**DATASHEET**

**SLC22A23 Rabbit Polyclonal Antibody**

CAT. NO. APA16871

**KEY FEATURES**

Target	SLC22A23	Source / Host	Rabbit
Reactivity	Human, Mouse, Rat	Clonality	Polyclonal
Applications	WB	Conjugation	Unconjugated
Form / Buffer	Liquid in 0.42% Potassium phosphate, 0.87% Sodium chloride, pH 7.3, 30% glycerol, and 0.01% sodium azide.		Storage at -20°C

**BACKGROUND**

SLC22A23 belongs to a large family of transmembrane proteins that function as uniporters, symporters, and antiporters to transport organic ions across cell membranes (Jacobsson et al., 2007 [PubMed 17714910]).

**APPLICATION**

To ensure optimal assay performance, AREX recommends conducting reagent titration tailored to each testing system for optimal detection results.

WB	1:500 - 1:2000
----	----------------

\*Results are sample-specific. Please refer to your local assay conditions and test parameters for reference.

**PRODUCT OVERVIEW**

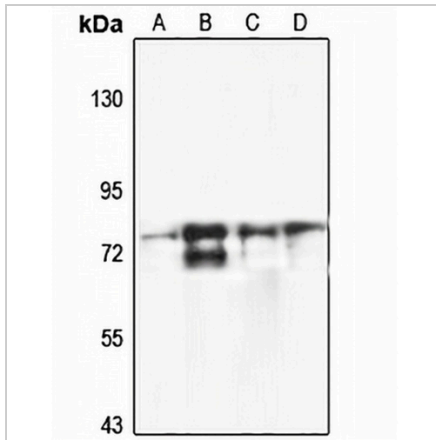
Description	Rabbit polyclonal antibody to SLC22A23
Specificity	Recognizes endogenous levels of SLC22A23 protein
Antibody Type	Primary antibody
Immunogen	Recombinant fusion protein of human SLC22A23. The exact sequence is proprietary.
Purification	The antibody was purified by immunogen affinity chromatography.
Molecular Weight	Predicted: 34; Observed: 74 kD
Form/Buffer	Liquid in 0.42% Potassium phosphate, 0.87% Sodium chloride, pH 7.3, 30% glycerol, and 0.01% sodium azide.
Alternative Names	C6orf85; Solute carrier family 22 member 23
Gene Symbol	SLC22A23
Entrez Gene	63027(Human); 73102(Mouse); 64559(Rat)
SwissProt	A1A5C7(Human); Q3UHH2(Mouse); Q9QZG1(Rat)

\*AREX continuously optimizes our products. Webpage content may not reflect the latest updates. For inquiries, please contact [info@arexbio.com](mailto:info@arexbio.com) or your local distributor.

\*Clone Number, Reactivity, Source/Host and Clonality can be found in the product name and Key Features section above.

**DATASHEET****SLC22A23 Rabbit Polyclonal Antibody**

CAT. NO. APA16871

**DATA**

Western blot analysis of SLC22A23 expression in Jurkat (A), mouse kidney (B), mouse liver (C), rat brain (D) whole cell lysates. (Predicted band size: 34; 38; 44; 73 kD; Observed band size: 74 kD)

**STORAGE**

Store at 4°C short term. For long term storage, store at -20°C, avoiding freeze/thaw cycles.

**NOTE**

For Research Use Only. Not for diagnostic, therapeutics, prophylactic or in vivo use.