

DATASHEET

PAHT Rabbit Polyclonal Antibody

CAT. NO. APA16872

KEY FEATURES

Target	PAHT	Source / Host	Rabbit
Reactivity	Human, Rat	Clonality	Polyclonal
Applications	WB	Conjugation	Unconjugated
Form / Buffer	Liquid in 0.42% Potassium phosphate, 0.87% Sodium chloride, pH 7.3, 30% glycerol, and 0.01% sodium azide.		Storage at-20°C

BACKGROUND

Secondary active transporter that functions as a Na(+)-independent organic anion (OA)/dicarboxylate antiporter where the uptake of one molecule of OA into the cell is coupled with an efflux of one molecule of intracellular dicarboxylate such as 2-oxoglutarate or glutarate -independent organic anion (OA)/dicarboxylate antiporter where the uptake of one molecule of OA into the cell is coupled with an efflux of one molecule of intracellular dicarboxylate such as 2-oxoglutarate or glutarate . Mediates the uptake of OA across the basolateral side of proximal tubule epithelial cells, thereby contributing to the renal elimination of endogenous OA from the systemic circulation into the urine .

APPLICATION

To ensure optimal assay performance, AREX recommends conducting reagent titration tailored to each testing system for optimal detection results.

WB	1:500 - 1:2000
----	----------------

*Results are sample-specific. Please refer to your local assay conditions and test parameters for reference.

PRODUCT OVERVIEW

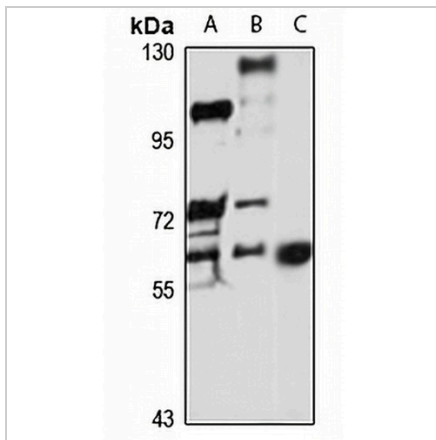
Description	Rabbit polyclonal antibody to PAHT
Specificity	Recognizes endogenous levels of PAHT protein
Antibody Type	Primary antibody
Immunogen	Recombinant fusion protein of human PAHT. The exact sequence is proprietary.
Purification	The antibody was purified by immunogen affinity chromatography.
Molecular Weight	Predicted: 55; Observed: 62 kD
Form/Buffer	Liquid in 0.42% Potassium phosphate, 0.87% Sodium chloride, pH 7.3, 30% glycerol, and 0.01% sodium azide.
Alternative Names	OAT1; PAHT; Solute carrier family 22 member 6; Organic anion transporter 1; hOAT1; PAH transporter; hPAHT; Renal organic anion transporter 1; hROAT1
Gene Symbol	SLC22A6
Entrez Gene	9356(Human); 29509(Rat)
SwissProt	Q4U2R8(Human); O35956(Rat)

*AREX continuously optimizes our products. Webpage content may not reflect the latest updates. For inquiries, please contact info@arexbio.com or your local distributor.

*Clone Number, Reactivity, Source/Host and Clonality can be found in the product name and Key Features section above.

DATASHEET**PAHT Rabbit Polyclonal Antibody**

CAT. NO. APA16872

DATA

Western blot analysis of PAHT expression in HT1080 (A), HT29 (B), rat kidney (C) whole cell lysates. (Predicted band size: 55; 57; 60; 61 kD; Observed band size: 62 kD)

STORAGE

Store at 4°C short term. For long term storage, store at -20°C, avoiding freeze/thaw cycles.

NOTE

For Research Use Only. Not for diagnostic, therapeutics, prophylactic or in vivo use.