

DATASHEET

SLC22A7 Rabbit Polyclonal Antibody

CAT. NO. APA16874

KEY FEATURES

Target	SLC22A7	Source / Host	Rabbit
Reactivity	Human, Mouse, Rat	Clonality	Polyclonal
Applications	WB	Conjugation	Unconjugated
Form / Buffer	Liquid in 0.42% Potassium phosphate, 0.87% Sodium chloride, pH 7.3, 30% glycerol, and 0.01% sodium azide.		Storage at-20°C

BACKGROUND

Functions as a Na(+)-independent bidirectional multispecific transporter -independent bidirectional multispecific transporter . Contributes to the renal and hepatic elimination of endogenous organic compounds from the systemic circulation into the urine and bile, respectively . Capable of transporting a wide range of purine and pyrimidine nucleobases, nucleosides and nucleotides, with cGMP, 2'deoxyguanosine and GMP being the preferred substrates . Functions as a pH- and chloride-independent cGMP bidirectional facilitative transporter that can regulate both intracellular and extracellular levels of cGMP and may be involved in cGMP signaling pathways .

APPLICATION

To ensure optimal assay performance, AREX recommends conducting reagent titration tailored to each testing system for optimal detection results.

WB	1:500 - 1:2000
----	----------------

*Results are sample-specific. Please refer to your local assay conditions and test parameters for reference.

PRODUCT OVERVIEW

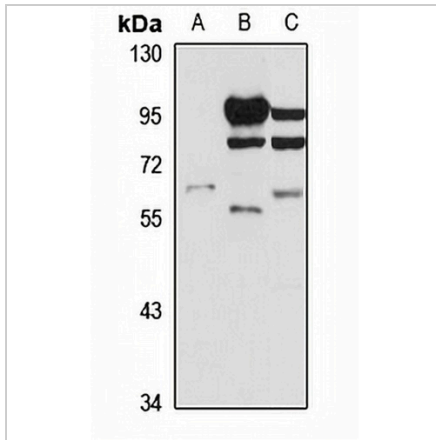
Description	Rabbit polyclonal antibody to SLC22A7
Specificity	Recognizes endogenous levels of SLC22A7 protein
Antibody Type	Primary antibody
Immunogen	Recombinant fusion protein of human SLC22A7. The exact sequence is proprietary.
Purification	The antibody was purified by immunogen affinity chromatography.
Molecular Weight	Predicted: 26; Observed: 60 kD
Form/Buffer	Liquid in 0.42% Potassium phosphate, 0.87% Sodium chloride, pH 7.3, 30% glycerol, and 0.01% sodium azide.
Alternative Names	NLT; OAT2; Solute carrier family 22 member 7; Novel liver transporter; Organic anion transporter 2; hOAT2
Gene Symbol	SLC22A7
Entrez Gene	10864(Human); 108114(Mouse); 89776(Rat)
SwissProt	Q9Y694(Human); Q91WU2(Mouse); Q5RLM2(Rat)

*AREX continuously optimizes our products. Webpage content may not reflect the latest updates. For inquiries, please contact info@arexbio.com or your local distributor.

*Clone Number, Reactivity, Source/Host and Clonality can be found in the product name and Key Features section above.

DATASHEET**SLC22A7 Rabbit Polyclonal Antibody**

CAT. NO. APA16874

DATA

Western blot analysis of SLC22A7 expression in HT29 (A), mouse liver (B), rat kidney (C) whole cell lysates. (Predicted band size: 26; 59; 60 kD; Observed band size: 60 kD)

STORAGE

Store at 4°C short term. For long term storage, store at -20°C, avoiding freeze/thaw cycles.

NOTE

For Research Use Only. Not for diagnostic, therapeutics, prophylactic or in vivo use.