

DATASHEET

SLC22A9 Rabbit Polyclonal Antibody

CAT. NO. APA16875

KEY FEATURES

Target	SLC22A9	Source / Host	Rabbit
Reactivity	Human, Mouse	Clonality	Polyclonal
Applications	WB	Conjugation	Unconjugated
Form / Buffer	Liquid in 0.42% Potassium phosphate, 0.87% Sodium chloride, pH 7.3, 30% glycerol, and 0.01% sodium azide.		Storage at -20°C

BACKGROUND

Sodium-independent organic anion transporter, exhibits high specificity for sulfated conjugates of xenobiotics and steroid hormones such as estrone 3-sulfate (E1S) and dehydroepiandrosterone sulfate (DHEAS) and dehydroepiandrosterone sulfate (DHEAS) . Can transport the statin pravastatin and may contribute to its disposition into the hepatocytes when the function of OATPs is compromised . It is specifically activated by 3 to 5 carbons-containing short-chain fatty acids/SCFAs, including propionate (propanoate), butyrate (butanoate) and valerate (pentanoate) . May operate the exchange of sulfated organic components against short-chain fatty acids/SCFAs, in particular butanoate, at the sinusoidal membrane of hepatocytes .

APPLICATION

To ensure optimal assay performance, AREX recommends conducting reagent titration tailored to each testing system for optimal detection results.

WB	1:500 - 1:2000
----	----------------

*Results are sample-specific. Please refer to your local assay conditions and test parameters for reference.

PRODUCT OVERVIEW

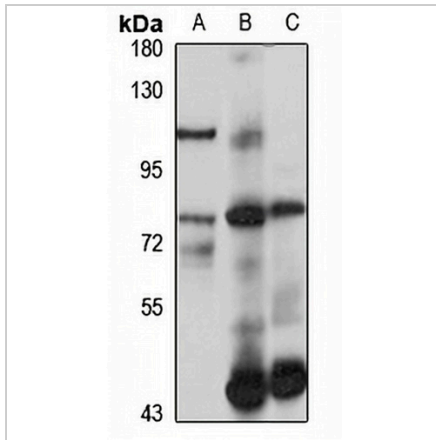
Description	Rabbit polyclonal antibody to SLC22A9
Specificity	Recognizes endogenous levels of SLC22A9 protein
Antibody Type	Primary antibody
Immunogen	Recombinant fusion protein of human SLC22A9. The exact sequence is proprietary.
Purification	The antibody was purified by immunogen affinity chromatography.
Molecular Weight	Predicted: 26; Observed: 75 kD
Form/Buffer	Liquid in 0.42% Potassium phosphate, 0.87% Sodium chloride, pH 7.3, 30% glycerol, and 0.01% sodium azide.
Alternative Names	OAT4; UST3; Solute carrier family 22 member 9; Organic anion transporter 4
Gene Symbol	SLC22A9
Entrez Gene	114571(Human)
SwissProt	Q8IVM8(Human)

*AREX continuously optimizes our products. Webpage content may not reflect the latest updates. For inquiries, please contact info@arexbio.com or your local distributor.

*Clone Number, Reactivity, Source/Host and Clonality can be found in the product name and Key Features section above.

DATASHEET**SLC22A9 Rabbit Polyclonal Antibody**

CAT. NO. APA16875

DATA

Western blot analysis of SLC22A9 expression in HeLa (A), mouse liver (B), mouse kidney (C) whole cell lysates. (Predicted band size: 26; 62 kD; Observed band size: 75 kD)

STORAGE

Store at 4°C short term. For long term storage, store at -20°C, avoiding freeze/thaw cycles.

NOTE

For Research Use Only. Not for diagnostic, therapeutics, prophylactic or in vivo use.