

DATASHEET

SLC23A1 Rabbit Polyclonal Antibody

CAT. NO. APA16876

KEY FEATURES

Target	SLC23A1	Source / Host	Rabbit
Reactivity	Human	Clonality	Polyclonal
Applications	WB	Conjugation	Unconjugated
Form / Buffer	Liquid in 0.42% Potassium phosphate, 0.87% Sodium chloride, pH 7.3, 30% glycerol, and 0.01% sodium azide.		Storage at -20°C

BACKGROUND

Sodium:ascorbate cotransporter. Mediates electrogenic uptake of vitamin C, with a stoichiometry of 2 Na(+) for each ascorbate for each ascorbate . Has retained some ancestral activity toward nucleobases such as urate, an oxidized purine. Low-affinity high-capacity sodium:urate cotransporter, may regulate serum urate levels by serving as a renal urate re-absorber .

APPLICATION

To ensure optimal assay performance, AREX recommends conducting reagent titration tailored to each testing system for optimal detection results.

WB	1:500 - 1:2000
----	----------------

*Results are sample-specific. Please refer to your local assay conditions and test parameters for reference.

PRODUCT OVERVIEW

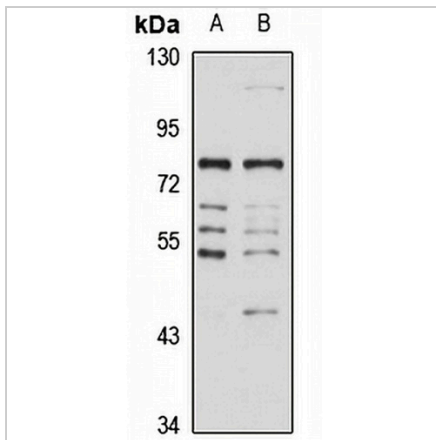
Description	Rabbit polyclonal antibody to SLC23A1
Specificity	Recognizes endogenous levels of SLC23A1 protein
Antibody Type	Primary antibody
Immunogen	Recombinant fusion protein of human SLC23A1. The exact sequence is proprietary.
Purification	The antibody was purified by immunogen affinity chromatography.
Molecular Weight	Predicted: 28; Observed: 80 kD
Form/Buffer	Liquid in 0.42% Potassium phosphate, 0.87% Sodium chloride, pH 7.3, 30% glycerol, and 0.01% sodium azide.
Alternative Names	SVCT1; YSPL3; Solute carrier family 23 member 1; Na(+)/L-ascorbic acid transporter 1; Sodium-dependent vitamin C transporter 1; hSVCT1; Yolk sac permease-like molecule 3
Gene Symbol	SLC23A1
Entrez Gene	9963(Human)
SwissProt	Q9UHI7(Human)

*AREX continuously optimizes our products. Webpage content may not reflect the latest updates. For inquiries, please contact info@arexbio.com or your local distributor.

*Clone Number, Reactivity, Source/Host and Clonality can be found in the product name and Key Features section above.

DATASHEET**SLC23A1 Rabbit Polyclonal Antibody**

CAT. NO. APA16876

DATA

Western blot analysis of SLC23A1 expression in A549 (A), SKOV3 (B) whole cell lysates. (Predicted band size: 28; 64; 65 kD; Observed band size: 80 kD)

STORAGE

Store at 4°C short term. For long term storage, store at -20°C, avoiding freeze/thaw cycles.

NOTE

For Research Use Only. Not for diagnostic, therapeutics, prophylactic or in vivo use.