

**DATASHEET**

**SLC23A2 Rabbit Polyclonal Antibody**

CAT. NO. APA16877

**KEY FEATURES**

Target	SLC23A2	Source / Host	Rabbit
Reactivity	Human, Mouse, Rat	Clonality	Polyclonal
Applications	WB	Conjugation	Unconjugated
Form / Buffer	Liquid in 0.42% Potassium phosphate, 0.87% Sodium chloride, pH 7.3, 30% glycerol, and 0.01% sodium azide.		Storage at -20°C

**BACKGROUND**

Sodium/ascorbate cotransporter . Mediates electrogenic uptake of vitamin C, with a stoichiometry of 2 Na(+) for each ascorbate .

**APPLICATION**

To ensure optimal assay performance, AREX recommends conducting reagent titration tailored to each testing system for optimal detection results.

WB	1:500 - 1:1000
----	----------------

\*Results are sample-specific. Please refer to your local assay conditions and test parameters for reference.

**PRODUCT OVERVIEW**

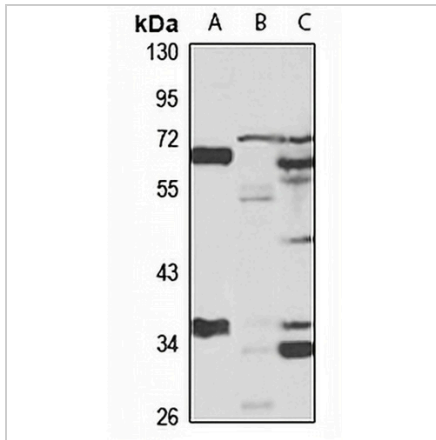
Description	Rabbit polyclonal antibody to SLC23A2
Specificity	Recognizes endogenous levels of SLC23A2 protein
Antibody Type	Primary antibody
Immunogen	Recombinant fusion protein of human SLC23A2. The exact sequence is proprietary.
Purification	The antibody was purified by immunogen affinity chromatography.
Molecular Weight	Predicted: 58; Observed: 70 kD
Form/Buffer	Liquid in 0.42% Potassium phosphate, 0.87% Sodium chloride, pH 7.3, 30% glycerol, and 0.01% sodium azide.
Alternative Names	KIAA0238; NBTL1; SLC23A1; SVCT2; YSPL2; Solute carrier family 23 member 2; Na(+)/L-ascorbic acid transporter 2; Nucleobase transporter-like 1 protein; Sodium-dependent vitamin C transporter 2; hSVCT2; Yolk sac permease-like molecule 2
Gene Symbol	SLC23A2
Entrez Gene	9962(Human); 54338(Mouse); 50622(Rat)
SwissProt	Q9UGH3(Human); Q9EPR4(Mouse); Q9WTW8(Rat)

\*AREX continuously optimizes our products. Webpage content may not reflect the latest updates. For inquiries, please contact [info@arexbio.com](mailto:info@arexbio.com) or your local distributor.

\*Clone Number, Reactivity, Source/Host and Clonality can be found in the product name and Key Features section above.

**DATASHEET****SLC23A2 Rabbit Polyclonal Antibody**

CAT. NO. APA16877

**DATA**

Western blot analysis of SLC23A2 expression in HepG2 (A), mouse lung (B), rat brain (C) whole cell lysates. (Predicted band size: 58; 70 kD; Observed band size: 70 kD)

**STORAGE**

Store at 4°C short term. For long term storage, store at -20°C, avoiding freeze/thaw cycles.

**NOTE**

For Research Use Only. Not for diagnostic, therapeutics, prophylactic or in vivo use.