

DATASHEET

SLC25A15 Rabbit Polyclonal Antibody

CAT. NO. APA16880

KEY FEATURES

Target	SLC25A15	Source / Host	Rabbit
Reactivity	Human, Mouse	Clonality	Polyclonal
Applications	WB	Conjugation	Unconjugated
Form / Buffer	Liquid in 0.42% Potassium phosphate, 0.87% Sodium chloride, pH 7.3, 30% glycerol, and 0.01% sodium azide.		Storage at -20°C

BACKGROUND

Mitochondrial ornithine-citrulline antiporter (Probable) . Catalyzes the exchange between cytosolic ornithine and mitochondrial citrulline plus an H(+), the proton compensates the positive charge of ornithine thus leading to an electroneutral transport. Plays a crucial role in the urea cycle, by connecting the cytosolic and the intramitochondrial reactions of the urea cycle (Probable) . Lysine and arginine are also transported by the antiport mechanism (Probable) . In addition, catalyzes an electroneutral exchange of ornithine or lysine for H(+), a reaction driven by the pH gradient across the inner membrane .

APPLICATION

To ensure optimal assay performance, AREX recommends conducting reagent titration tailored to each testing system for optimal detection results.

WB	1:500 - 1:2000
----	----------------

*Results are sample-specific. Please refer to your local assay conditions and test parameters for reference.

PRODUCT OVERVIEW

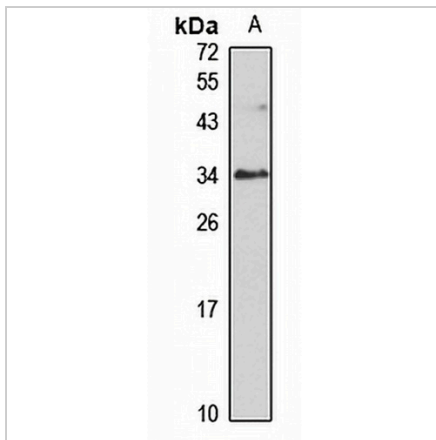
Description	Rabbit polyclonal antibody to SLC25A15
Specificity	Recognizes endogenous levels of SLC25A15 protein
Antibody Type	Primary antibody
Immunogen	Recombinant fusion protein of human SLC25A15. The exact sequence is proprietary.
Purification	The antibody was purified by immunogen affinity chromatography.
Molecular Weight	Predicted: 32 kD; Observed: 35 kD
Form/Buffer	Liquid in 0.42% Potassium phosphate, 0.87% Sodium chloride, pH 7.3, 30% glycerol, and 0.01% sodium azide.
Alternative Names	ORNT1; Mitochondrial ornithine transporter 1; Solute carrier family 25 member 15
Gene Symbol	SLC25A15
Entrez Gene	10166(Human); 18408(Mouse)
SwissProt	Q9Y619(Human); Q9WVD5(Mouse)

*AREX continuously optimizes our products. Webpage content may not reflect the latest updates. For inquiries, please contact info@arexbio.com or your local distributor.

*Clone Number, Reactivity, Source/Host and Clonality can be found in the product name and Key Features section above.

DATASHEET**SLC25A15 Rabbit Polyclonal Antibody**

CAT. NO. APA16880

DATA

Western blot analysis of SLC25A15 expression in MCF7 (A) whole cell lysates. (Predicted band size: 32 kD; Observed band size: 35 kD)

STORAGE

Store at 4°C short term. For long term storage, store at -20°C, avoiding freeze/thaw cycles.

NOTE

For Research Use Only. Not for diagnostic, therapeutics, prophylactic or in vivo use.