

DATASHEET

SLC25A19 Rabbit Polyclonal Antibody

CAT. NO. APA16881

KEY FEATURES

Target	SLC25A19	Source / Host	Rabbit
Reactivity	Human, Mouse	Clonality	Polyclonal
Applications	WB, IF/ICC	Conjugation	Unconjugated
Form / Buffer	Liquid in 0.42% Potassium phosphate, 0.87% Sodium chloride, pH 7.3, 30% glycerol, and 0.01% sodium azide.		Storage at -20°C

BACKGROUND

Mitochondrial transporter mediating uptake of thiamine diphosphate into mitochondria. It is not clear if the antiporter activity is affected by the membrane potential or by the proton electrochemical gradient.

APPLICATION

To ensure optimal assay performance, AREX recommends conducting reagent titration tailored to each testing system for optimal detection results.

WB	1:500 - 1:2000
IF/ICC	1:50 - 1:200

*Results are sample-specific. Please refer to your local assay conditions and test parameters for reference.

PRODUCT OVERVIEW

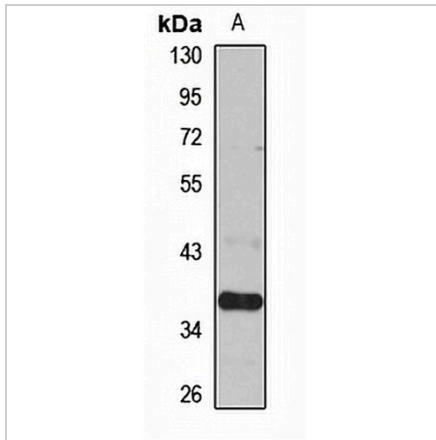
Description	Rabbit polyclonal antibody to SLC25A19
Specificity	Recognizes endogenous levels of SLC25A19 protein
Antibody Type	Primary antibody
Immunogen	Recombinant fusion protein of human SLC25A19. The exact sequence is proprietary.
Purification	The antibody was purified by immunogen affinity chromatography.
Molecular Weight	Predicted: 29; Observed: 36 kD
Form/Buffer	Liquid in 0.42% Potassium phosphate, 0.87% Sodium chloride, pH 7.3, 30% glycerol, and 0.01% sodium azide.
Alternative Names	DNC; MUP1; Mitochondrial thiamine pyrophosphate carrier; Mitochondrial uncoupling protein 1; Solute carrier family 25 member 19
Gene Symbol	SLC25A19
Entrez Gene	60386(Human); 67283(Mouse)
SwissProt	Q9HC21(Human); Q9DAM5(Mouse)

*AREX continuously optimizes our products. Webpage content may not reflect the latest updates. For inquiries, please contact info@arexbio.com or your local distributor.

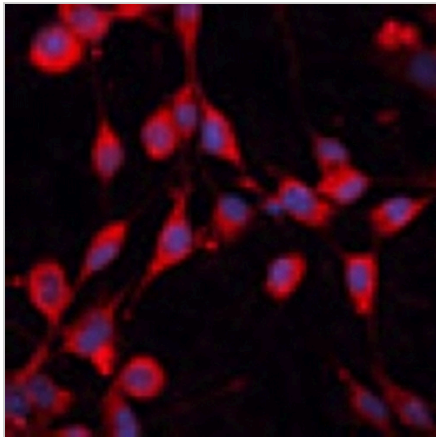
*Clone Number, Reactivity, Source/Host and Clonality can be found in the product name and Key Features section above.

DATASHEET**SLC25A19 Rabbit Polyclonal Antibody**

CAT. NO. APA16881

DATA

Western blot analysis of SLC25A19 expression in HT29 (A) whole cell lysates. (Predicted band size: 29; 35 kD; Observed band size: 36 kD)



Immunofluorescent analysis of SLC25A19 staining in NIH3T3 cells. Formalin-fixed cells were permeabilized with 0.1% Triton X-100 in TBS for 5-10 minutes and blocked with 3% BSA-PBS for 30 minutes at room temperature. Cells were probed with the primary antibody in 3% BSA-PBS and incubated overnight at 4 °C in a humidified chamber. Cells were washed with PBST and incubated with a Alexa Fluor 594-conjugated secondary antibody (red) in PBS at room temperature in the dark.

STORAGE

Store at 4°C short term. For long term storage, store at -20°C, avoiding freeze/thaw cycles.

NOTE

For Research Use Only. Not for diagnostic, therapeutics, prophylactic or in vivo use.