

DATASHEET

SLC25A22 Rabbit Polyclonal Antibody

CAT. NO. APA16882

KEY FEATURES

Target	SLC25A22	Source / Host	Rabbit
Reactivity	Human, Mouse, Rat	Clonality	Polyclonal
Applications	WB, IF/ICC	Conjugation	Unconjugated
Form / Buffer	Liquid in 0.42% Potassium phosphate, 0.87% Sodium chloride, pH 7.3, 30% glycerol, and 0.01% sodium azide.		Storage at-20°C

BACKGROUND

Mitochondrial glutamate/H(+) symporter. Responsible for the transport of glutamate from the cytosol into the mitochondrial matrix with the concomitant import of a proton symporter. Responsible for the transport of glutamate from the cytosol into the mitochondrial matrix with the concomitant import of a proton . Plays a role in the control of glucose-stimulated insulin secretion .

APPLICATION

To ensure optimal assay performance, AREX recommends conducting reagent titration tailored to each testing system for optimal detection results.

WB	1:500 - 1:2000
IF/ICC	1:50 - 1:200

*Results are sample-specific. Please refer to your local assay conditions and test parameters for reference.

PRODUCT OVERVIEW

Description	Rabbit polyclonal antibody to SLC25A22
Specificity	Recognizes endogenous levels of SLC25A22 protein
Antibody Type	Primary antibody
Immunogen	Recombinant fusion protein of human SLC25A22. The exact sequence is proprietary.
Purification	The antibody was purified by immunogen affinity chromatography.
Molecular Weight	Predicted: 34 kD; Observed: 34 kD
Form/Buffer	Liquid in 0.42% Potassium phosphate, 0.87% Sodium chloride, pH 7.3, 30% glycerol, and 0.01% sodium azide.
Alternative Names	GC1; Mitochondrial glutamate carrier 1; GC-1; Glutamate/H(+) symporter 1; Solute carrier family 25 member 22
Gene Symbol	SLC25A22
Entrez Gene	79751(Human); 68267(Mouse)
SwissProt	Q9H936(Human); Q9D6M3(Mouse)

*AREX continuously optimizes our products. Webpage content may not reflect the latest updates. For inquiries, please contact info@arex.bio or your local distributor.

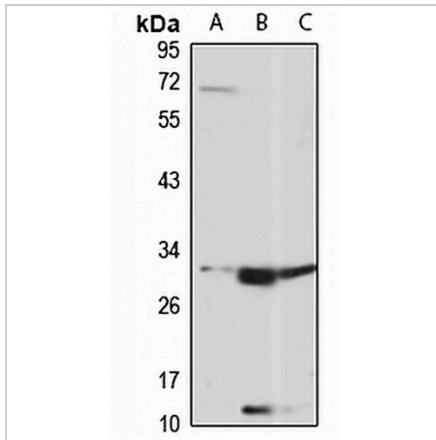
*Clone Number, Reactivity, Source/Host and Clonality can be found in the product name and Key Features section above.

DATASHEET

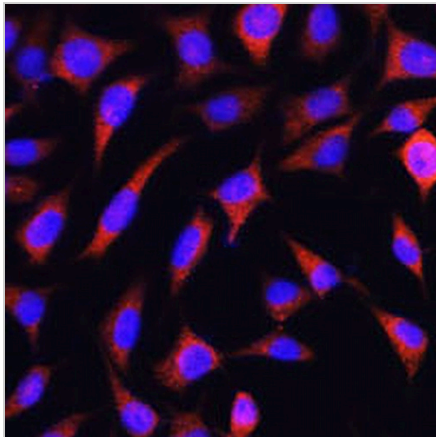
SLC25A22 Rabbit Polyclonal Antibody

CAT. NO. APA16882

DATA



Western blot analysis of SLC25A22 expression in A549 (A), mouse brain (B), rat brain (C) whole cell lysates. (Predicted band size: 34 kD; Observed band size: 34 kD)



Immunofluorescent analysis of SLC25A22 staining in L929 cells. Formalin-fixed cells were permeabilized with 0.1% Triton X-100 in TBS for 5-10 minutes and blocked with 3% BSA-PBS for 30 minutes at room temperature. Cells were probed with the primary antibody in 3% BSA-PBS and incubated overnight at 4 °C in a humidified chamber. Cells were washed with PBST and incubated with a AREX® Fluor 594-conjugated secondary antibody (red) in PBS at room temperature in the dark. DAPI was used to stain the cell nuclei (blue).

STORAGE

Store at 4°C short term. For long term storage, store at -20°C, avoiding freeze/thaw cycles.

NOTE

For Research Use Only. Not for diagnostic, therapeutics, prophylactic or in vivo use.