

DATASHEET

SLC25A44 Rabbit Polyclonal Antibody

CAT. NO. APA16884

KEY FEATURES

Target	SLC25A44	Source / Host	Rabbit
Reactivity	Human, Mouse, Rat	Clonality	Polyclonal
Applications	WB	Conjugation	Unconjugated
Form / Buffer	Liquid in 0.42% Potassium phosphate, 0.87% Sodium chloride, pH 7.3, 30% glycerol, and 0.01% sodium azide.		Storage at -20°C

BACKGROUND

Mitochondrial solute transporter which transports branched-chain amino acid (BCAA; valine, leucine and isoleucine) into mitochondria in brown adipose tissue (BAT) . BAT is involved in BCAA catabolism and actively utilizes BCAA in the mitochondria for thermogenesis into mitochondria in brown adipose tissue (BAT) . BAT is involved in BCAA catabolism and actively utilizes BCAA in the mitochondria for thermogenesis .

APPLICATION

To ensure optimal assay performance, AREX recommends conducting reagent titration tailored to each testing system for optimal detection results.

WB	1:500 - 1:2000
----	----------------

*Results are sample-specific. Please refer to your local assay conditions and test parameters for reference.

PRODUCT OVERVIEW

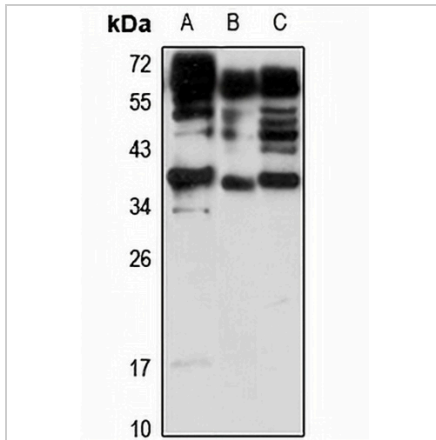
Description	Rabbit polyclonal antibody to SLC25A44
Specificity	Recognizes endogenous levels of SLC25A44 protein
Antibody Type	Primary antibody
Immunogen	Recombinant fusion protein of human SLC25A44. The exact sequence is proprietary.
Purification	The antibody was purified by immunogen affinity chromatography.
Molecular Weight	Predicted: 35 kD; Observed: 36 kD
Form/Buffer	Liquid in 0.42% Potassium phosphate, 0.87% Sodium chloride, pH 7.3, 30% glycerol, and 0.01% sodium azide.
Alternative Names	KIAA0446; Solute carrier family 25 member 44
Gene Symbol	SLC25A44
Entrez Gene	9673(Human); 229517(Mouse)
SwissProt	Q96H78(Human); Q8BGF9(Mouse)

*AREX continuously optimizes our products. Webpage content may not reflect the latest updates. For inquiries, please contact info@arexbio.com or your local distributor.

*Clone Number, Reactivity, Source/Host and Clonality can be found in the product name and Key Features section above.

DATASHEET**SLC25A44 Rabbit Polyclonal Antibody**

CAT. NO. APA16884

DATA

Western blot analysis of SLC25A44 expression in A431 (A), mouse brain (B), rat brain (C) whole cell lysates. (Predicted band size: 35 kD; Observed band size: 36 kD)

STORAGE

Store at 4°C short term. For long term storage, store at -20°C, avoiding freeze/thaw cycles.

NOTE

For Research Use Only. Not for diagnostic, therapeutics, prophylactic or in vivo use.