

DATASHEET

DRA Rabbit Polyclonal Antibody

CAT. NO. APA16886

KEY FEATURES

Target	DRA	Source / Host	Rabbit
Reactivity	Human, Mouse, Rat	Clonality	Polyclonal
Applications	WB	Conjugation	Unconjugated
Form / Buffer	Liquid in 0.42% Potassium phosphate, 0.87% Sodium chloride, pH 7.3, 30% glycerol, and 0.01% sodium azide.		Storage at-20°C

BACKGROUND

Mediates chloride-bicarbonate exchange with a chloride bicarbonate stoichiometry of 2:1 in the intestinal epithelia . Plays a role in the chloride and bicarbonate homeostasis during sperm epididymal maturation and capacitation .

APPLICATION

To ensure optimal assay performance, AREX recommends conducting reagent titration tailored to each testing system for optimal detection results.

WB	1:500 - 1:2000
----	----------------

*Results are sample-specific. Please refer to your local assay conditions and test parameters for reference.

PRODUCT OVERVIEW

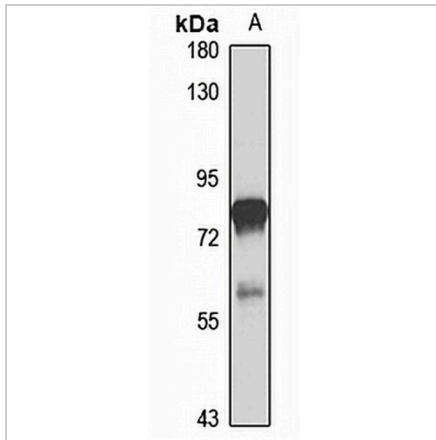
Description	Rabbit polyclonal antibody to DRA
Specificity	Recognizes endogenous levels of DRA protein
Antibody Type	Primary antibody
Immunogen	Recombinant fusion protein of human DRA. The exact sequence is proprietary.
Purification	The antibody was purified by immunogen affinity chromatography.
Molecular Weight	Predicted: 84 kD; Observed: 85 kD
Form/Buffer	Liquid in 0.42% Potassium phosphate, 0.87% Sodium chloride, pH 7.3, 30% glycerol, and 0.01% sodium azide.
Alternative Names	DRA; Chloride anion exchanger; Down-regulated in adenoma; Protein DRA; Solute carrier family 26 member 3
Gene Symbol	SLC26A3
Entrez Gene	1811(Human); 13487(Mouse); 114629(Rat)
SwissProt	P40879(Human); Q9WVC8(Mouse); Q924C9(Rat)

*AREX continuously optimizes our products. Webpage content may not reflect the latest updates. For inquiries, please contact info@arexbio.com or your local distributor.

*Clone Number, Reactivity, Source/Host and Clonality can be found in the product name and Key Features section above.

DATASHEET**DRA Rabbit Polyclonal Antibody**

CAT. NO. APA16886

DATA

Western blot analysis of DRA expression in NCIH125 (A) whole cell lysates. (Predicted band size: 84 kD; Observed band size: 85 kD)

STORAGE

Store at 4°C short term. For long term storage, store at -20°C, avoiding freeze/thaw cycles.

NOTE

For Research Use Only. Not for diagnostic, therapeutics, prophylactic or in vivo use.