

**DATASHEET**

**SLC27A1 Rabbit Polyclonal Antibody**

CAT. NO. APA16887

**KEY FEATURES**

Target	SLC27A1	Source / Host	Rabbit
Reactivity	Human	Clonality	Polyclonal
Applications	WB	Conjugation	Unconjugated
Form / Buffer	Liquid in 0.42% Potassium phosphate, 0.87% Sodium chloride, pH 7.3, 30% glycerol, and 0.01% sodium azide.		Storage at -20°C

**BACKGROUND**

Mediates the import of long-chain fatty acids (LCFA) into the cell by facilitating their transport at the plasma membrane into the cell by facilitating their transport at the plasma membrane. Also functions as an acyl-CoA ligase catalyzing the ATP-dependent formation of fatty acyl-CoA using LCFA and very-long-chain fatty acids (VLCFA) as substrates, which prevents fatty acid efflux from cells and might drive more fatty acid uptake. May act directly as a bona fide transporter, or alternatively, in a cytoplasmic or membrane-associated multimeric protein complex to trap and draw fatty acids towards accumulation. Plays a pivotal role in regulating available LCFA substrates from exogenous sources in tissues undergoing high levels of beta-oxidation or triglyceride synthesis.

**APPLICATION**

To ensure optimal assay performance, AREX recommends conducting reagent titration tailored to each testing system for optimal detection results.

WB	1:500 - 1:1000
----	----------------

\*Results are sample-specific. Please refer to your local assay conditions and test parameters for reference.

**PRODUCT OVERVIEW**

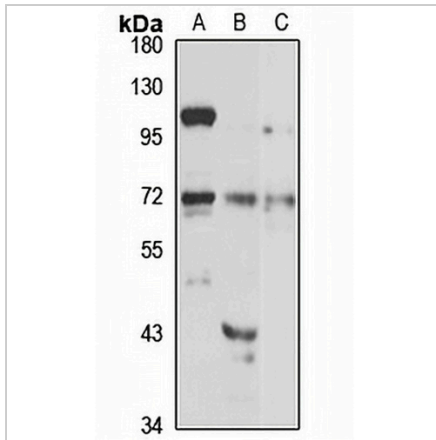
Description	Rabbit polyclonal antibody to SLC27A1
Specificity	Recognizes endogenous levels of SLC27A1 protein
Antibody Type	Primary antibody
Immunogen	Recombinant fusion protein of human SLC27A1. The exact sequence is proprietary.
Purification	The antibody was purified by immunogen affinity chromatography.
Molecular Weight	Predicted: 71 kD; Observed: 71 kD
Form/Buffer	Liquid in 0.42% Potassium phosphate, 0.87% Sodium chloride, pH 7.3, 30% glycerol, and 0.01% sodium azide.
Alternative Names	ACSVL5; FATP1; Long-chain fatty acid transport protein 1; FATP-1; Fatty acid transport protein 1; Solute carrier family 27 member 1
Gene Symbol	SLC27A1
Entrez Gene	376497(Human); 26457(Mouse)
SwissProt	Q6PCB7(Human); Q60714(Mouse); P97849(Rat)

\*AREX continuously optimizes our products. Webpage content may not reflect the latest updates. For inquiries, please contact [info@arexbio.com](mailto:info@arexbio.com) or your local distributor.

\*Clone Number, Reactivity, Source/Host and Clonality can be found in the product name and Key Features section above.

**DATASHEET****SLC27A1 Rabbit Polyclonal Antibody**

CAT. NO. APA16887

**DATA**

Western blot analysis of SLC27A1 expression in MCF7 (A), mouse skeletal muscle (B), rat heart (C) whole cell lysates. (Predicted band size: 71 kD; Observed band size: 71 kD)

**STORAGE**

Store at 4°C short term. For long term storage, store at -20°C, avoiding freeze/thaw cycles.

**NOTE**

For Research Use Only. Not for diagnostic, therapeutics, prophylactic or in vivo use.