

DATASHEET

SLC2A9 Rabbit Polyclonal Antibody

CAT. NO. APA16890

KEY FEATURES

| | | | |
|---------------|---|---------------|---------------------|
| Target | SLC2A9 | Source / Host | Rabbit |
| Reactivity | Human, Mouse | Clonality | Polyclonal |
| Applications | WB | Conjugation | Unconjugated |
| Form / Buffer | Liquid in 0.42% Potassium phosphate, 0.87% Sodium chloride, pH 7.3, 30% glycerol, and 0.01% sodium azide. | | Storage at -20°C |

BACKGROUND

High-capacity urate transporter, which may play a role in the urate reabsorption by proximal tubules . May have a residual high-affinity, low-capacity glucose and fructose transporter activity . Transports urate at rates 45- to 60-fold faster than glucose . Does not transport galactose . May mediate small uptake of adenine but not of other nucleobases .

APPLICATION

To ensure optimal assay performance, AREX recommends conducting reagent titration tailored to each testing system for optimal detection results.

| | |
|----|----------------|
| WB | 1:500 - 1:2000 |
|----|----------------|

*Results are sample-specific. Please refer to your local assay conditions and test parameters for reference.

PRODUCT OVERVIEW

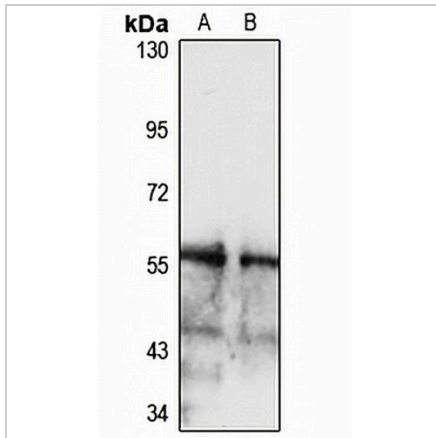
| | |
|-------------------|---|
| Description | Rabbit polyclonal antibody to SLC2A9 |
| Specificity | Recognizes endogenous levels of SLC2A9 protein |
| Antibody Type | Primary antibody |
| Immunogen | KLH-conjugated synthetic peptide of human SLC2A9. The exact sequence is proprietary. |
| Purification | The antibody was purified by immunogen affinity chromatography. |
| Molecular Weight | Predicted: 55; Observed: 55 kD |
| Form/Buffer | Liquid in 0.42% Potassium phosphate, 0.87% Sodium chloride, pH 7.3, 30% glycerol, and 0.01% sodium azide. |
| Alternative Names | GLUT9; Solute carrier family 2 facilitated glucose transporter member 9; Glucose transporter type 9; GLUT-9 |
| Gene Symbol | SLC2A9 |
| Entrez Gene | 56606(Human) |
| SwissProt | Q9NRM0(Human) |

*AREX continuously optimizes our products. Webpage content may not reflect the latest updates. For inquiries, please contact info@arexbio.com or your local distributor.

*Clone Number, Reactivity, Source/Host and Clonality can be found in the product name and Key Features section above.

DATASHEET**SLC2A9 Rabbit Polyclonal Antibody**

CAT. NO. APA16890

DATA

Western blot analysis of SLC2A9 expression in SKOV3 (A), mouse kidney (B) whole cell lysates. (Predicted band size: 55; 58 kD; Observed band size: 55 kD)

STORAGE

Store at 4°C short term. For long term storage, store at -20°C, avoiding freeze/thaw cycles.

NOTE

For Research Use Only. Not for diagnostic, therapeutics, prophylactic or in vivo use.