

**DATASHEET**

**SLC30A6 Rabbit Polyclonal Antibody**

CAT. NO. APA16892

**KEY FEATURES**

Target	SLC30A6	Source / Host	Rabbit
Reactivity	Human, Mouse, Rat	Clonality	Polyclonal
Applications	WB	Conjugation	Unconjugated
Form / Buffer	Liquid in 0.42% Potassium phosphate, 0.87% Sodium chloride, pH 7.3, 30% glycerol, and 0.01% sodium azide.		Storage at -20°C

**BACKGROUND**

Has probably no intrinsic transporter activity but together with SLC30A5 forms a functional zinc ion:proton antiporter heterodimer, mediating zinc entry into the lumen of organelles along the secretory pathway . As part of that zinc ion:proton antiporter, contributes to zinc ion homeostasis within the early secretory pathway and regulates the activation and folding of enzymes like alkaline phosphatases and enzymes involved in phosphatidylinositol glycan anchor biosynthesis .

**APPLICATION**

To ensure optimal assay performance, AREX recommends conducting reagent titration tailored to each testing system for optimal detection results.

WB	1:500 - 1:2000
----	----------------

\*Results are sample-specific. Please refer to your local assay conditions and test parameters for reference.

**PRODUCT OVERVIEW**

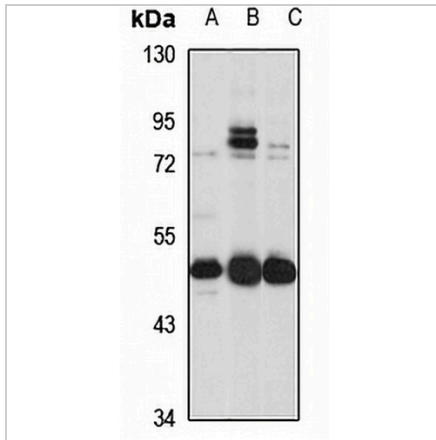
Description	Rabbit polyclonal antibody to SLC30A6
Specificity	Recognizes endogenous levels of SLC30A6 protein
Antibody Type	Primary antibody
Immunogen	Recombinant fusion protein of human SLC30A6. The exact sequence is proprietary.
Purification	The antibody was purified by immunogen affinity chromatography.
Molecular Weight	Predicted: 47; Observed: 51 kD
Form/Buffer	Liquid in 0.42% Potassium phosphate, 0.87% Sodium chloride, pH 7.3, 30% glycerol, and 0.01% sodium azide.
Alternative Names	ZNT6; Zinc transporter 6; ZnT-6; Solute carrier family 30 member 6
Gene Symbol	SLC30A6
Entrez Gene	55676(Human); 210148(Mouse)
SwissProt	Q6NXT4(Human); Q8BJM5(Mouse)

\*AREX continuously optimizes our products. Webpage content may not reflect the latest updates. For inquiries, please contact [info@arexbio.com](mailto:info@arexbio.com) or your local distributor.

\*Clone Number, Reactivity, Source/Host and Clonality can be found in the product name and Key Features section above.

**DATASHEET****SLC30A6 Rabbit Polyclonal Antibody**

CAT. NO. APA16892

**DATA**

Western blot analysis of SLC30A6 expression in U87MG (A), mouse brain (B), rat brain (C) whole cell lysates. (Predicted band size: 47; 48; 51; 55 kD; Observed band size: 51 kD)

**STORAGE**

Store at 4°C short term. For long term storage, store at -20°C, avoiding freeze/thaw cycles.

**NOTE**

For Research Use Only. Not for diagnostic, therapeutics, prophylactic or in vivo use.