

DATASHEET

SLC31A1 Rabbit Polyclonal Antibody

CAT. NO. APA16893

KEY FEATURES

| | | | |
|---------------|---|---------------|---------------------|
| Target | SLC31A1 | Source / Host | Rabbit |
| Reactivity | Human, Mouse, Rat | Clonality | Polyclonal |
| Applications | WB | Conjugation | Unconjugated |
| Form / Buffer | Liquid in 0.42% Potassium phosphate, 0.87% Sodium chloride, pH 7.3, 30% glycerol, and 0.01% sodium azide. | | Storage at -20°C |

BACKGROUND

Uniporter that mediates the transport of copper(1+) from the extracellular space to the cytoplasm, across the plasma membrane from the extracellular space to the cytoplasm, across the plasma membrane and delivers directly copper(1+) to specific chaperone such as ATOX1, via a copper(1+)- mediated transient interaction between the C-terminal domain and a copper(1+) chaperone, thus controlling intracellular copper(1+) levels . May function in copper(1+) import from the apical membrane thus may drive intestinal copper absorption . The copper(1+) transport mechanism is sodium-independent, saturable and of high-affinity . Also mediates the uptake of silver(1+) . May function in the influx of the platinum-containing chemotherapeutic agents .

APPLICATION

To ensure optimal assay performance, AREX recommends conducting reagent titration tailored to each testing system for optimal detection results.

| | |
|----|----------------|
| WB | 1:500 - 1:2000 |
|----|----------------|

*Results are sample-specific. Please refer to your local assay conditions and test parameters for reference.

PRODUCT OVERVIEW

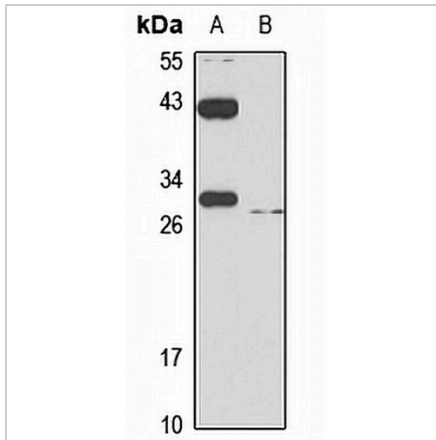
| | |
|-------------------|--|
| Description | Rabbit polyclonal antibody to SLC31A1 |
| Specificity | Recognizes endogenous levels of SLC31A1 protein |
| Antibody Type | Primary antibody |
| Immunogen | Recombinant fusion protein of human SLC31A1. The exact sequence is proprietary. |
| Purification | The antibody was purified by immunogen affinity chromatography. |
| Molecular Weight | Predicted: 21 kD; Observed: 30 kD |
| Form/Buffer | Liquid in 0.42% Potassium phosphate, 0.87% Sodium chloride, pH 7.3, 30% glycerol, and 0.01% sodium azide. |
| Alternative Names | COPT1; CTR1; High affinity copper uptake protein 1; Copper transporter 1; hCTR1; Solute carrier family 31 member 1 |
| Gene Symbol | SLC31A1 |
| Entrez Gene | 1317(Human); 20529(Mouse); 171135(Rat) |
| SwissProt | O15431(Human); Q8K211(Mouse); Q9JK41(Rat) |

*AREX continuously optimizes our products. Webpage content may not reflect the latest updates. For inquiries, please contact info@arexbio.com or your local distributor.

*Clone Number, Reactivity, Source/Host and Clonality can be found in the product name and Key Features section above.

DATASHEET**SLC31A1 Rabbit Polyclonal Antibody**

CAT. NO. APA16893

DATA

Western blot analysis of SLC31A1 expression in A549 (A), mouse kidney (B) whole cell lysates. (Predicted band size: 21 kD; Observed band size: 30 kD)

STORAGE

Store at 4°C short term. For long term storage, store at -20°C, avoiding freeze/thaw cycles.

NOTE

For Research Use Only. Not for diagnostic, therapeutics, prophylactic or in vivo use.