

DATASHEET

NaPi-2c Rabbit Polyclonal Antibody

CAT. NO. APA16894

KEY FEATURES

Target	NaPi-2c	Source / Host	Rabbit
Reactivity	Human, Mouse, Rat	Clonality	Polyclonal
Applications	WB	Conjugation	Unconjugated
Form / Buffer	Liquid in 0.42% Potassium phosphate, 0.87% Sodium chloride, pH 7.3, 30% glycerol, and 0.01% sodium azide.	Storage	at-20°C

BACKGROUND

Involved in actively transporting phosphate into cells via Na⁽⁺⁾ cotransport in the renal brush border membrane cotransport in the renal brush border membrane . The cotransport has a Na⁽⁺⁾:Pi stoichiometry of 2:1 and is electroneutral .

APPLICATION

To ensure optimal assay performance, AREX recommends conducting reagent titration tailored to each testing system for optimal detection results.

WB	1:500 - 1:2000
----	----------------

*Results are sample-specific. Please refer to your local assay conditions and test parameters for reference.

PRODUCT OVERVIEW

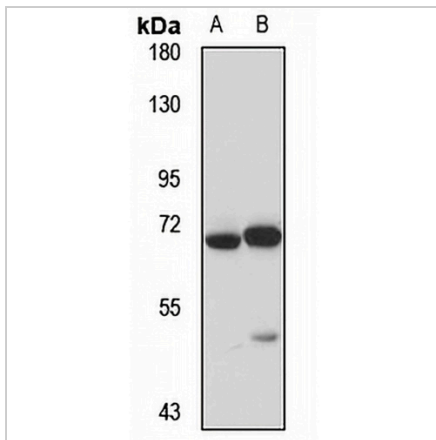
Description	Rabbit polyclonal antibody to NaPi-2c
Specificity	Recognizes endogenous levels of NaPi-2c protein
Antibody Type	Primary antibody
Immunogen	Recombinant fusion protein of human NaPi-2c. The exact sequence is proprietary.
Purification	The antibody was purified by immunogen affinity chromatography.
Molecular Weight	Predicted: 63 kD; Observed: 63 kD
Form/Buffer	Liquid in 0.42% Potassium phosphate, 0.87% Sodium chloride, pH 7.3, 30% glycerol, and 0.01% sodium azide.
Alternative Names	NPT2C; NPTIIC; Sodium-dependent phosphate transport protein 2C; Sodium-phosphate transport protein 2C; Na ⁽⁺⁾ -dependent phosphate cotransporter 2C; Sodium/inorganic phosphate cotransporter IIC; Sodium/phosphate cotransporter 2C; Na ⁽⁺⁾ /Pi cotransporter 2C; NaPi-2c; Solute carrier family 34 member 3
Gene Symbol	SLC34A3
Entrez Gene	142680(Human); 142681(Mouse); 246234(Rat)
SwissProt	Q8N130(Human); Q80SU6(Mouse); Q8K4R8(Rat)

*AREX continuously optimizes our products. Webpage content may not reflect the latest updates. For inquiries, please contact info@arexbio.com or your local distributor.

*Clone Number, Reactivity, Source/Host and Clonality can be found in the product name and Key Features section above.

DATASHEET**NaPi-2c Rabbit Polyclonal Antibody**

CAT. NO. APA16894

DATA

Western blot analysis of NaPi-2c expression in mouse kidney (A), rat brain (B) whole cell lysates. (Predicted band size: 63 kD; Observed band size: 63 kD)

STORAGE

Store at 4°C short term. For long term storage, store at -20°C, avoiding freeze/thaw cycles.

NOTE

For Research Use Only. Not for diagnostic, therapeutics, prophylactic or in vivo use.