

**DATASHEET**

**SLC35D3 Rabbit Polyclonal Antibody**

CAT. NO. APA16895

**KEY FEATURES**

Target	SLC35D3	Source / Host	Rabbit
Reactivity	Human, Mouse	Clonality	Polyclonal
Applications	WB	Conjugation	Unconjugated
Form / Buffer	Liquid in 0.42% Potassium phosphate, 0.87% Sodium chloride, pH 7.3, 30% glycerol, and 0.01% sodium azide.		Storage at -20°C

**BACKGROUND**

Probable UDP-glucose transmembrane transporter involved in UDP-glucose transport from the cytosol to the lumen of synaptic vesicles . It is involved in platelet dense granules maturation .

**APPLICATION**

To ensure optimal assay performance, AREX recommends conducting reagent titration tailored to each testing system for optimal detection results.

WB	1:500 - 1:2000
----	----------------

\*Results are sample-specific. Please refer to your local assay conditions and test parameters for reference.

**PRODUCT OVERVIEW**

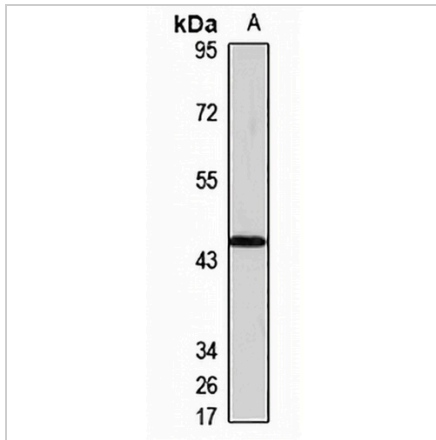
Description	Rabbit polyclonal antibody to SLC35D3
Specificity	Recognizes endogenous levels of SLC35D3 protein
Antibody Type	Primary antibody
Immunogen	Recombinant fusion protein of human SLC35D3. The exact sequence is proprietary.
Purification	The antibody was purified by immunogen affinity chromatography.
Molecular Weight	Predicted: 44 kD; Observed: 44 kD
Form/Buffer	Liquid in 0.42% Potassium phosphate, 0.87% Sodium chloride, pH 7.3, 30% glycerol, and 0.01% sodium azide.
Alternative Names	FRCL1; Solute carrier family 35 member D3; Fringe connection-like protein 1
Gene Symbol	SLC35D3
Entrez Gene	340146(Human); 76157(Mouse)
SwissProt	Q5M8T2(Human); Q8BGF8(Mouse)

\*AREX continuously optimizes our products. Webpage content may not reflect the latest updates. For inquiries, please contact [info@arexbio.com](mailto:info@arexbio.com) or your local distributor.

\*Clone Number, Reactivity, Source/Host and Clonality can be found in the product name and Key Features section above.

**DATASHEET****SLC35D3 Rabbit Polyclonal Antibody**

CAT. NO. APA16895

**DATA**

Western blot analysis of SLC35D3 expression in K562 (A) whole cell lysates. (Predicted band size: 44 kD; Observed band size: 44 kD)

**STORAGE**

Store at 4°C short term. For long term storage, store at -20°C, avoiding freeze/thaw cycles.

**NOTE**

For Research Use Only. Not for diagnostic, therapeutics, prophylactic or in vivo use.