

DATASHEET

SLC37A2 Rabbit Polyclonal Antibody

CAT. NO. APA16896

KEY FEATURES

Target	SLC37A2	Source / Host	Rabbit
Reactivity	Human, Mouse	Clonality	Polyclonal
Applications	WB	Conjugation	Unconjugated
Form / Buffer	Liquid in 0.42% Potassium phosphate, 0.87% Sodium chloride, pH 7.3, 30% glycerol, and 0.01% sodium azide.		Storage at -20°C

BACKGROUND

Inorganic phosphate and glucose-6-phosphate antiporter. May transport cytoplasmic glucose-6-phosphate into the lumen of the endoplasmic reticulum and translocate inorganic phosphate into the opposite direction. Independent of a luminal glucose-6-phosphatase. May not play a role in homeostatic regulation of blood glucose levels.

APPLICATION

To ensure optimal assay performance, AREX recommends conducting reagent titration tailored to each testing system for optimal detection results.

WB	1:500 - 1:2000
----	----------------

*Results are sample-specific. Please refer to your local assay conditions and test parameters for reference.

PRODUCT OVERVIEW

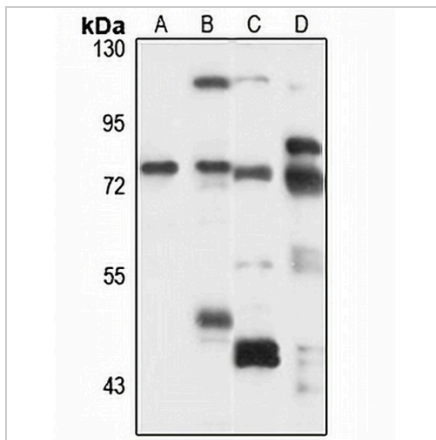
Description	Rabbit polyclonal antibody to SLC37A2
Specificity	Recognizes endogenous levels of SLC37A2 protein
Antibody Type	Primary antibody
Immunogen	Recombinant fusion protein of human SLC37A2. The exact sequence is proprietary.
Purification	The antibody was purified by immunogen affinity chromatography.
Molecular Weight	Predicted: 13; Observed: 75 kD
Form/Buffer	Liquid in 0.42% Potassium phosphate, 0.87% Sodium chloride, pH 7.3, 30% glycerol, and 0.01% sodium azide.
Alternative Names	SPX2; Sugar phosphate exchanger 2; Solute carrier family 37 member 2
Gene Symbol	SLC37A2
Entrez Gene	219855(Human); 56857(Mouse)
SwissProt	Q8TED4(Human); Q9WU81(Mouse)

*AREX continuously optimizes our products. Webpage content may not reflect the latest updates. For inquiries, please contact info@arexbio.com or your local distributor.

*Clone Number, Reactivity, Source/Host and Clonality can be found in the product name and Key Features section above.

DATASHEET**SLC37A2 Rabbit Polyclonal Antibody**

CAT. NO. APA16896

DATA

Western blot analysis of SLC37A2 expression in HepG2 (A), HT29 (B), mouse heart (C), mouse lung (D) whole cell lysates. (Predicted band size: 13; 42; 54 kD; Observed band size: 75 kD)

STORAGE

Store at 4°C short term. For long term storage, store at -20°C, avoiding freeze/thaw cycles.

NOTE

For Research Use Only. Not for diagnostic, therapeutics, prophylactic or in vivo use.