

DATASHEET

SLC38A3 Rabbit Polyclonal Antibody

CAT. NO. APA16898

KEY FEATURES

| | | | |
|---------------|---|---------------|--------------------|
| Target | SLC38A3 | Source / Host | Rabbit |
| Reactivity | Human, Mouse, Rat | Clonality | Polyclonal |
| Applications | WB | Conjugation | Unconjugated |
| Form / Buffer | Liquid in 0.42% Potassium phosphate, 0.87% Sodium chloride, pH 7.3, 30% glycerol, and 0.01% sodium azide. | | Storage at-20°C |

BACKGROUND

Symporter that cotransports specific neutral amino acids and sodium ions, coupled to an H(+) antiporter activity antiporter activity . Mainly participates in the glutamate-GABA-glutamine cycle in brain where it transports L-glutamine from astrocytes in the intercellular space for the replenishment of both neurotransmitters glutamate and gamma-aminobutyric acid (GABA) in neurons and also functions as the major influx transporter in ganglion cells mediating the uptake of glutamine . The transport activity is specific for L-glutamine, L-histidine and L-asparagine . The transport is electroneutral coupled to the cotransport of 1 Na(+) and the antiport of 1 H(+) .

APPLICATION

To ensure optimal assay performance, AREX recommends conducting reagent titration tailored to each testing system for optimal detection results.

| | |
|----|----------------|
| WB | 1:500 - 1:2000 |
|----|----------------|

*Results are sample-specific. Please refer to your local assay conditions and test parameters for reference.

PRODUCT OVERVIEW

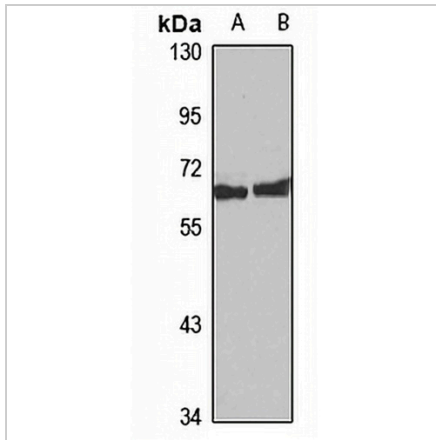
| | |
|-------------------|---|
| Description | Rabbit polyclonal antibody to SLC38A3 |
| Specificity | Recognizes endogenous levels of SLC38A3 protein |
| Antibody Type | Primary antibody |
| Immunogen | Recombinant fusion protein of human SLC38A3. The exact sequence is proprietary. |
| Purification | The antibody was purified by immunogen affinity chromatography. |
| Molecular Weight | Predicted: 55 kD; Observed: 60 kD |
| Form/Buffer | Liquid in 0.42% Potassium phosphate, 0.87% Sodium chloride, pH 7.3, 30% glycerol, and 0.01% sodium azide. |
| Alternative Names | G17; NAT1; SN1; SNAT3; Sodium-coupled neutral amino acid transporter 3; N-system amino acid transporter 1; Na(+)-coupled neutral amino acid transporter 3; Solute carrier family 38 member 3; System N amino acid transporter 1 |
| Gene Symbol | SLC38A3 |
| Entrez Gene | 10991(Human); 76257(Mouse); 252919(Rat) |
| SwissProt | Q99624(Human); Q9DCP2(Mouse); Q9JHZ9(Rat) |

*AREX continuously optimizes our products. Webpage content may not reflect the latest updates. For inquiries, please contact info@arexbio.com or your local distributor.

*Clone Number, Reactivity, Source/Host and Clonality can be found in the product name and Key Features section above.

DATASHEET**SLC38A3 Rabbit Polyclonal Antibody**

CAT. NO. APA16898

DATA

Western blot analysis of SLC38A3 expression in HeLa (A), mouse brain (B) whole cell lysates. (Predicted band size: 55 kD; Observed band size: 60 kD)

STORAGE

Store at 4°C short term. For long term storage, store at -20°C, avoiding freeze/thaw cycles.

NOTE

For Research Use Only. Not for diagnostic, therapeutics, prophylactic or in vivo use.