

DATASHEET

SLC39A8 Rabbit Polyclonal Antibody

CAT. NO. APA16900

KEY FEATURES

Target	SLC39A8	Source / Host	Rabbit
Reactivity	Human, Mouse, Rat	Clonality	Polyclonal
Applications	WB, IF/ICC	Conjugation	Unconjugated
Form / Buffer	Liquid in 0.42% Potassium phosphate, 0.87% Sodium chloride, pH 7.3, 30% glycerol, and 0.01% sodium azide.		Storage at-20°C

BACKGROUND

Electroneutral divalent metal cation:bicarbonate symporter of the plasma membrane mediating the cellular uptake of zinc and manganese, two divalent metal cations important for development, tissue homeostasis and immunity . Transports an electroneutral complex composed of a divalent metal cation and two bicarbonate anions or alternatively a bicarbonate and a selenite anion . Thereby, it also contributes to the cellular uptake of selenium, an essential trace metal and micronutrient . Also imports cadmium a non-essential metal which is cytotoxic and carcinogenic . May also transport iron and cobalt through membranes .

APPLICATION

To ensure optimal assay performance, AREX recommends conducting reagent titration tailored to each testing system for optimal detection results.

WB	1:500 - 1:2000
IF/ICC	1:50 - 1:200

*Results are sample-specific. Please refer to your local assay conditions and test parameters for reference.

PRODUCT OVERVIEW

Description	Rabbit polyclonal antibody to SLC39A8
Specificity	Recognizes endogenous levels of SLC39A8 protein
Antibody Type	Primary antibody
Immunogen	Recombinant fusion protein of human SLC39A8. The exact sequence is proprietary.
Purification	The antibody was purified by immunogen affinity chromatography.
Molecular Weight	Predicted: 43; Observed: 50 kD
Form/Buffer	Liquid in 0.42% Potassium phosphate, 0.87% Sodium chloride, pH 7.3, 30% glycerol, and 0.01% sodium azide.
Alternative Names	BIGM103; ZIP8; Zinc transporter ZIP8; BCG-induced integral membrane protein in monocyte clone 103 protein; LIV-1 subfamily of ZIP zinc transporter 6; LZT-Hs6; Solute carrier family 39 member 8; Zrt- and Irt-like protein 8; ZIP-8
Gene Symbol	SLC39A8
Entrez Gene	64116(Human); 67547(Mouse); 295455(Rat)
SwissProt	Q9C0K1(Human); Q91W10(Mouse); Q5FVQ0(Rat)

*AREX continuously optimizes our products. Webpage content may not reflect the latest updates. For inquiries, please contact info@arexbio.com or your local distributor.

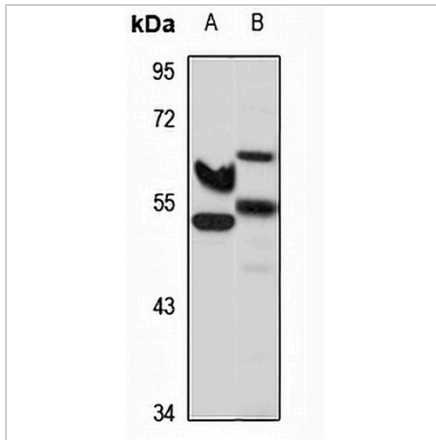
*Clone Number, Reactivity, Source/Host and Clonality can be found in the product name and Key Features section above.

DATASHEET

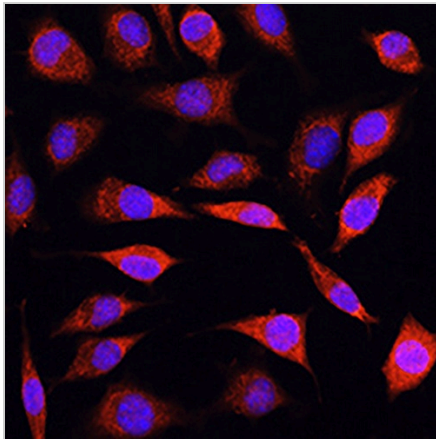
SLC39A8 Rabbit Polyclonal Antibody

CAT. NO. APA16900

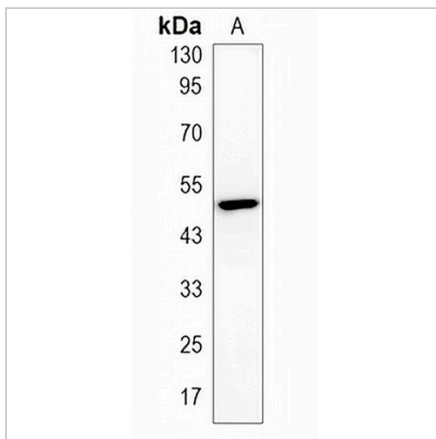
DATA



Western blot analysis of SLC39A8 expression in HeLa (A), mouse liver (B) whole cell lysates. (Predicted band size: 43; 48; 49 kD; Observed band size: 50 kD)



Immunofluorescent analysis of SLC39A8 staining in L929 cells. Formalin-fixed cells were permeabilized with 0.1% Triton X-100 in TBS for 5-10 minutes and blocked with 3% BSA-PBS for 30 minutes at room temperature. Cells were probed with the primary antibody in 3% BSA-PBS and incubated overnight at 4 °C in a humidified chamber. Cells were washed with PBST and incubated with a AREX® Fluor 594-conjugated secondary antibody (red) in PBS at room temperature in the dark. DAPI was used to stain the cell nuclei (blue).



Western blot analysis of SLC39A8 expression in HL60 (A) whole cell lysates. (Predicted band size: 43; 48; 49 kD; Observed band size: 50 kD)

STORAGE

Store at 4°C short term. For long term storage, store at -20°C, avoiding freeze/thaw cycles.

NOTE

For Research Use Only. Not for diagnostic, therapeutics, prophylactic or in vivo use.