

DATASHEET

SLC47A1 Rabbit Polyclonal Antibody

CAT. NO. APA16901

KEY FEATURES

Target	SLC47A1	Source / Host	Rabbit
Reactivity	Human, Rat	Clonality	Polyclonal
Applications	WB	Conjugation	Unconjugated
Form / Buffer	Liquid in 0.42% Potassium phosphate, 0.87% Sodium chloride, pH 7.3, 30% glycerol, and 0.01% sodium azide.		Storage at-20°C

BACKGROUND

Multidrug efflux pump that functions as a H(+)/organic cation antiporter /organic cation antiporter . Plays a physiological role in the excretion of cationic compounds including endogenous metabolites, drugs, toxins through the kidney and liver, into urine and bile respectively . Mediates the efflux of endogenous compounds such as creatinine, vitamin B1/thiamine, agmatine and estrone-3-sulfate . May also contribute to regulate the transport of cationic compounds in testis across the blood-testis-barrier (Probable).

APPLICATION

To ensure optimal assay performance, AREX recommends conducting reagent titration tailored to each testing system for optimal detection results.

WB	1:500 - 1:2000
----	----------------

*Results are sample-specific. Please refer to your local assay conditions and test parameters for reference.

PRODUCT OVERVIEW

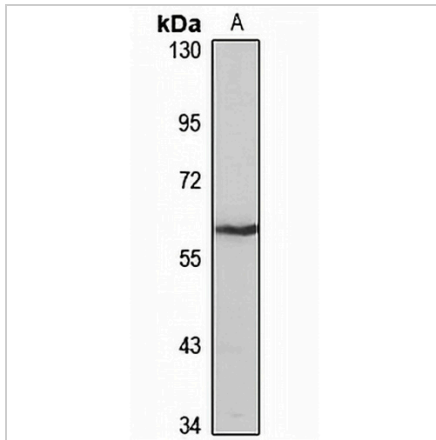
Description	Rabbit polyclonal antibody to SLC47A1
Specificity	Recognizes endogenous levels of SLC47A1 protein
Antibody Type	Primary antibody
Immunogen	Recombinant fusion protein of human SLC47A1. The exact sequence is proprietary.
Purification	The antibody was purified by immunogen affinity chromatography.
Molecular Weight	Predicted: 31; Observed: 62 kD
Form/Buffer	Liquid in 0.42% Potassium phosphate, 0.87% Sodium chloride, pH 7.3, 30% glycerol, and 0.01% sodium azide.
Alternative Names	MATE1; Multidrug and toxin extrusion protein 1; MATE-1; hMATE-1; Solute carrier family 47 member 1
Gene Symbol	SLC47A1
Entrez Gene	55244(Human); 360539(Rat)
SwissProt	Q96FL8(Human); Q5I0E9(Rat)

*AREX continuously optimizes our products. Webpage content may not reflect the latest updates. For inquiries, please contact info@arexbio.com or your local distributor.

*Clone Number, Reactivity, Source/Host and Clonality can be found in the product name and Key Features section above.

DATASHEET**SLC47A1 Rabbit Polyclonal Antibody**

CAT. NO. APA16901

DATA

Western blot analysis of SLC47A1 expression in rat liver (A) whole cell lysates. (Predicted band size: 31; 61; 63 kD; Observed band size: 62 kD)

STORAGE

Store at 4°C short term. For long term storage, store at -20°C, avoiding freeze/thaw cycles.

NOTE

For Research Use Only. Not for diagnostic, therapeutics, prophylactic or in vivo use.