

**DATASHEET**
**SLC4A1 Rabbit Polyclonal Antibody**
**CAT. NO. APA16902**
**KEY FEATURES**

Target	SLC4A1	Source / Host	Rabbit
Reactivity	Human, Mouse, Rat	Clonality	Polyclonal
Applications	WB	Conjugation	Unconjugated
Form / Buffer	Liquid in 0.42% Potassium phosphate, 0.87% Sodium chloride, pH 7.3, 30% glycerol, and 0.01% sodium azide.		Storage at -20°C

**BACKGROUND**

Functions both as a transporter that mediates electroneutral anion exchange across the cell membrane and as a structural protein. Component of the ankyrin-1 complex of the erythrocyte membrane; required for normal flexibility and stability of the erythrocyte membrane and for normal erythrocyte shape via the interactions of its cytoplasmic domain with cytoskeletal proteins, glycolytic enzymes, and hemoglobin. Functions as a transporter that mediates the 1:1 exchange of inorganic anions across the erythrocyte membrane. Mediates chloride-bicarbonate exchange in the kidney, and is required for normal acidification of the urine.

**APPLICATION**

To ensure optimal assay performance, AREX recommends conducting reagent titration tailored to each testing system for optimal detection results.

WB	1:500 - 1:2000
----	----------------

\*Results are sample-specific. Please refer to your local assay conditions and test parameters for reference.

**PRODUCT OVERVIEW**

Description	Rabbit polyclonal antibody to SLC4A1
Specificity	Recognizes endogenous levels of SLC4A1 protein
Antibody Type	Primary antibody
Immunogen	Recombinant fusion protein of human SLC4A1. The exact sequence is proprietary.
Purification	The antibody was purified by immunogen affinity chromatography.
Molecular Weight	Predicted: 101 kD; Observed: 102 kD
Form/Buffer	Liquid in 0.42% Potassium phosphate, 0.87% Sodium chloride, pH 7.3, 30% glycerol, and 0.01% sodium azide.
Alternative Names	AE1; DI; EPB3; Band 3 anion transport protein; Anion exchange protein 1; AE 1; Anion exchanger 1; Solute carrier family 4 member 1; CD233
Gene Symbol	SLC4A1
Entrez Gene	6521(Human); 20533(Mouse); 24779(Rat)
SwissProt	P02730(Human); P04919(Mouse); P23562(Rat)

\*AREX continuously optimizes our products. Webpage content may not reflect the latest updates. For inquiries, please contact [info@arexbio.com](mailto:info@arexbio.com) or your local distributor.

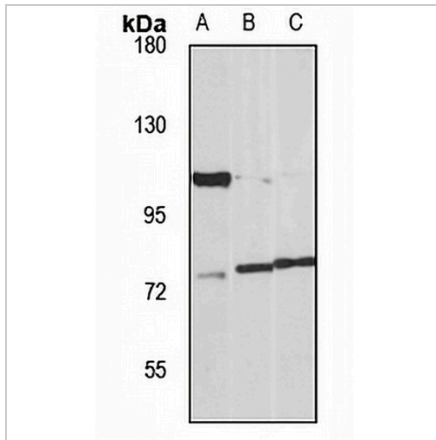
\*Clone Number, Reactivity, Source/Host and Clonality can be found in the product name and Key Features section above.

**DATASHEET**

**SLC4A1 Rabbit Polyclonal Antibody**

CAT. NO. APA16902

**DATA**



Western blot analysis of SLC4A1 expression in K562 (A), mouse brain (B), rat liver (C) whole cell lysates. (Predicted band size: 101 kD; Observed band size: 102 kD)

**STORAGE**

Store at 4°C short term. For long term storage, store at -20°C, avoiding freeze/thaw cycles.

**NOTE**

For Research Use Only. Not for diagnostic, therapeutics, prophylactic or in vivo use.