

## DATASHEET

# SLC4A8 Rabbit Polyclonal Antibody

CAT. NO. APA16903

### KEY FEATURES

Target	SLC4A8	Source / Host	Rabbit
Reactivity	Human, Mouse, Rat	Clonality	Polyclonal
Applications	WB	Conjugation	Unconjugated
Form / Buffer	Liquid in 0.42% Potassium phosphate, 0.87% Sodium chloride, pH 7.3, 30% glycerol, and 0.01% sodium azide.		Storage at-20°C

### BACKGROUND

Mediates electroneutral sodium- and carbonate-dependent chloride-HCO<sub>3</sub><sup>(-)</sup> exchange with a Na<sup>(+)</sup>:HCO<sub>3</sub><sup>(-)</sup> stoichiometry of 2:1 exchange with a Na<sup>(+)</sup>:HCO<sub>3</sub><sup>(-)</sup> stoichiometry of 2:1 . Plays a major role in pH regulation in neurons . Mediates sodium reabsorption in the renal cortical collecting ducts .

### APPLICATION

To ensure optimal assay performance, AREX recommends conducting reagent titration tailored to each testing system for optimal detection results.

WB	1:500 - 1:2000
----	----------------

\*Results are sample-specific. Please refer to your local assay conditions and test parameters for reference.

### PRODUCT OVERVIEW

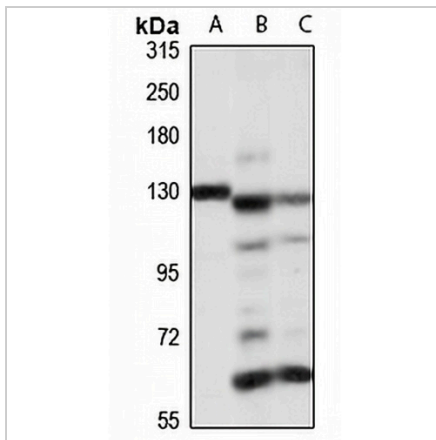
Description	Rabbit polyclonal antibody to SLC4A8
Specificity	Recognizes endogenous levels of SLC4A8 protein
Antibody Type	Primary antibody
Immunogen	Recombinant fusion protein of human SLC4A8. The exact sequence is proprietary.
Purification	The antibody was purified by immunogen affinity chromatography.
Molecular Weight	Predicted: 71; Observed: 123 kD
Form/Buffer	Liquid in 0.42% Potassium phosphate, 0.87% Sodium chloride, pH 7.3, 30% glycerol, and 0.01% sodium azide.
Alternative Names	KIAA0739; NBC; NBC3; NDCBE1; Electroneutral sodium bicarbonate exchanger 1; Electroneutral Na <sup>(+)</sup> -driven Cl-HCO <sub>3</sub> exchanger; Solute carrier family 4 member 8; k-NBC3
Gene Symbol	SLC4A8
Entrez Gene	9498(Human); 59033(Mouse); 315311(Rat)
SwissProt	Q2Y0W8(Human); Q8JZR6(Mouse); Q6RVG2(Rat)

\*AREX continuously optimizes our products. Webpage content may not reflect the latest updates. For inquiries, please contact [info@arexbio.com](mailto:info@arexbio.com) or your local distributor.

\*Clone Number, Reactivity, Source/Host and Clonality can be found in the product name and Key Features section above.

**DATASHEET****SLC4A8 Rabbit Polyclonal Antibody**

CAT. NO. APA16903

**DATA**

Western blot analysis of SLC4A8 expression in SHSY5Y (A), mouse lung (B), rat kidney (C) whole cell lysates. (Predicted band size: 71; 77; 83; 111; 117; 120; 122 kD; Observed band size: 123 kD)

**STORAGE**

Store at 4°C short term. For long term storage, store at -20°C, avoiding freeze/thaw cycles.

**NOTE**

For Research Use Only. Not for diagnostic, therapeutics, prophylactic or in vivo use.