

DATASHEET

SLC5A11 Rabbit Polyclonal Antibody

CAT. NO. APA16904

KEY FEATURES

Target	SLC5A11	Source / Host	Rabbit
Reactivity	Human, Mouse, Rat	Clonality	Polyclonal
Applications	WB	Conjugation	Unconjugated
Form / Buffer	Liquid in 0.42% Potassium phosphate, 0.87% Sodium chloride, pH 7.3, 30% glycerol, and 0.01% sodium azide.		Storage at-20°C

BACKGROUND

Involved in the sodium-dependent cotransport of myo-inositol (MI) with a Na(+):MI stoichiometry of 2:1 with a Na(+):MI stoichiometry of 2:1 . Exclusively responsible for apical MI transport and absorption in intestine . Can also transport D-chiro-inositol (DCI) but not L-fucose . Exhibits stereospecific cotransport of both D-glucose and D-xylose . May induce apoptosis through the TNF, PDCD1 pathway . May play a role in the regulation of MI concentration in serum, involving reabsorption in at least the proximal tubule of the kidney .

APPLICATION

To ensure optimal assay performance, AREX recommends conducting reagent titration tailored to each testing system for optimal detection results.

WB	1:500 - 1:2000
----	----------------

*Results are sample-specific. Please refer to your local assay conditions and test parameters for reference.

PRODUCT OVERVIEW

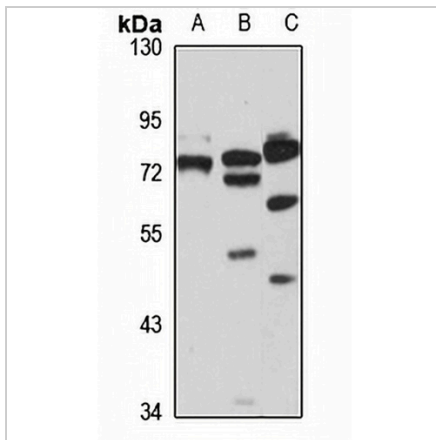
Description	Rabbit polyclonal antibody to SLC5A11
Specificity	Recognizes endogenous levels of SLC5A11 protein
Antibody Type	Primary antibody
Immunogen	Recombinant fusion protein of human SLC5A11. The exact sequence is proprietary.
Purification	The antibody was purified by immunogen affinity chromatography.
Molecular Weight	Predicted: 57; Observed: 74 kD
Form/Buffer	Liquid in 0.42% Potassium phosphate, 0.87% Sodium chloride, pH 7.3, 30% glycerol, and 0.01% sodium azide.
Alternative Names	KST1; SLGTX; SMIT2; Sodium/myo-inositol cotransporter 2; Na(+)/myo-inositol cotransporter 2; Sodium-dependent glucose cotransporter; Sodium/glucose cotransporter KST1; Sodium/myo-inositol transporter 2; SMIT2; Solute carrier family 5 member 11
Gene Symbol	SLC5A11
Entrez Gene	115584(Human); 233836(Mouse)
SwissProt	Q8WWX8(Human); Q8K0E3(Mouse); Q9Z1F2(Rat)

*AREX continuously optimizes our products. Webpage content may not reflect the latest updates. For inquiries, please contact info@arexbio.com or your local distributor.

*Clone Number, Reactivity, Source/Host and Clonality can be found in the product name and Key Features section above.

DATASHEET**SLC5A11 Rabbit Polyclonal Antibody**

CAT. NO. APA16904

DATA

Western blot analysis of SLC5A11 expression in U87MG (A), mouse kidney (B), rat brain (C) whole cell lysates. (Predicted band size: 57; 66; 67; 69; 74; 81 kD; Observed band size: 74 kD)

STORAGE

Store at 4°C short term. For long term storage, store at -20°C, avoiding freeze/thaw cycles.

NOTE

For Research Use Only. Not for diagnostic, therapeutics, prophylactic or in vivo use.