

DATASHEET

SLC5A12 Rabbit Polyclonal Antibody

CAT. NO. APA16905

KEY FEATURES

Target	SLC5A12	Source / Host	Rabbit
Reactivity	Human	Clonality	Polyclonal
Applications	WB	Conjugation	Unconjugated
Form / Buffer	Liquid in 0.42% Potassium phosphate, 0.87% Sodium chloride, pH 7.3, 30% glycerol, and 0.01% sodium azide.		Storage at-20°C

BACKGROUND

Acts as an electroneutral and low-affinity sodium (Na(+))-dependent sodium-coupled solute transporter (-)-dependent sodium-coupled solute transporter . Catalyzes the transport across the plasma membrane of many monocarboxylates such as lactate, pyruvate, nicotinate, propionate, butyrate and beta-D-hydroxybutyrate . May be responsible for the first step of reabsorption of monocarboxylates from the lumen of the proximal tubule of the kidney and the small intestine. May play also a role in monocarboxylates transport in the retina .

APPLICATION

To ensure optimal assay performance, AREX recommends conducting reagent titration tailored to each testing system for optimal detection results.

WB	1:500 - 1:2000
----	----------------

*Results are sample-specific. Please refer to your local assay conditions and test parameters for reference.

PRODUCT OVERVIEW

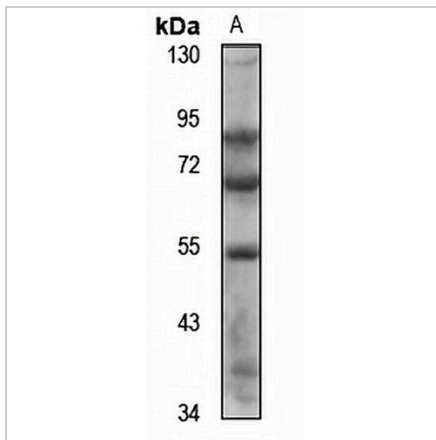
Description	Rabbit polyclonal antibody to SLC5A12
Specificity	Recognizes endogenous levels of SLC5A12 protein
Antibody Type	Primary antibody
Immunogen	Recombinant fusion protein of human SLC5A12. The exact sequence is proprietary.
Purification	The antibody was purified by immunogen affinity chromatography.
Molecular Weight	Predicted: 44; Observed: 67 kD
Form/Buffer	Liquid in 0.42% Potassium phosphate, 0.87% Sodium chloride, pH 7.3, 30% glycerol, and 0.01% sodium azide.
Alternative Names	SMCT2; Sodium-coupled monocarboxylate transporter 2; Electroneutral sodium monocarboxylate cotransporter; Low-affinity sodium-lactate cotransporter; Solute carrier family 5 member 12
Gene Symbol	SLC5A12
Entrez Gene	159963(Human)
SwissProt	Q1EHB4(Human)

*AREX continuously optimizes our products. Webpage content may not reflect the latest updates. For inquiries, please contact info@arexbio.com or your local distributor.

*Clone Number, Reactivity, Source/Host and Clonality can be found in the product name and Key Features section above.

DATASHEET**SLC5A12 Rabbit Polyclonal Antibody**

CAT. NO. APA16905

DATA

Western blot analysis of SLC5A12 expression in HEK293T (A) whole cell lysates. (Predicted band size: 44; 67 kD; Observed band size: 67 kD)

STORAGE

Store at 4°C short term. For long term storage, store at -20°C, avoiding freeze/thaw cycles.

NOTE

For Research Use Only. Not for diagnostic, therapeutics, prophylactic or in vivo use.