

DATASHEET

Dopamine Transporter Rabbit Polyclonal Antibody

CAT. NO. APA16908

KEY FEATURES

Target	Dopamine Transporter	Source / Host	Rabbit
Reactivity	Human, Mouse, Rat	Clonality	Polyclonal
Applications	WB, IHC, IF/ICC	Conjugation	Unconjugated
Form / Buffer	Liquid in 0.42% Potassium phosphate, 0.87% Sodium chloride, pH 7.3, 30% glycerol, and 0.01% sodium azide.		Storage at-20°C

BACKGROUND

Mediates sodium- and chloride-dependent transport of dopamine . Also mediates sodium- and chloride-dependent transport of norepinephrine (also known as noradrenaline) . Regulator of light-dependent retinal hyaloid vessel regression, downstream of OPN5 signaling .

APPLICATION

To ensure optimal assay performance, AREX recommends conducting reagent titration tailored to each testing system for optimal detection results.

WB	1:500 - 1:2000
IHC	1:50 - 1:200
IF/ICC	1:50 - 1:200

*Results are sample-specific. Please refer to your local assay conditions and test parameters for reference.

PRODUCT OVERVIEW

Description	Rabbit polyclonal antibody to Dopamine Transporter
Specificity	Recognizes endogenous levels of Dopamine Transporter protein
Antibody Type	Primary antibody
Immunogen	KLH-conjugated synthetic peptide of human Dopamine Transporter. The exact sequence is proprietary.
Purification	The antibody was purified by immunogen affinity chromatography.
Molecular Weight	Predicted: 68 kD; Observed: 72; 90 kD
Form/Buffer	Liquid in 0.42% Potassium phosphate, 0.87% Sodium chloride, pH 7.3, 30% glycerol, and 0.01% sodium azide.
Alternative Names	DAT1; Sodium-dependent dopamine transporter; DA transporter; DAT; Solute carrier family 6 member 3
Gene Symbol	SLC6A3
Entrez Gene	6531(Human); 13162(Mouse); 24898(Rat)
SwissProt	Q01959(Human); Q61327(Mouse); P23977(Rat)

*AREX continuously optimizes our products. Webpage content may not reflect the latest updates. For inquiries, please contact info@arexbio.com or your local distributor.

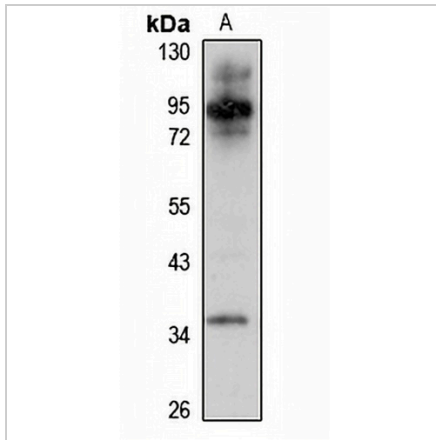
*Clone Number, Reactivity, Source/Host and Clonality can be found in the product name and Key Features section above.

DATASHEET

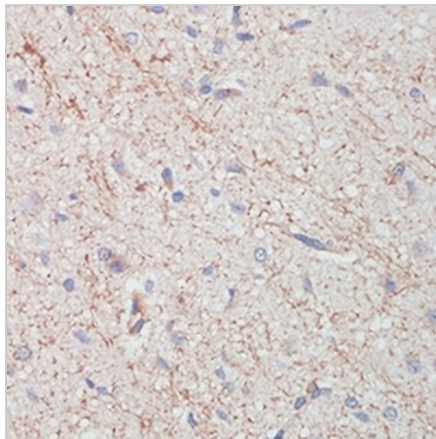
Dopamine Transporter Rabbit Polyclonal Antibody

CAT. NO. APA16908

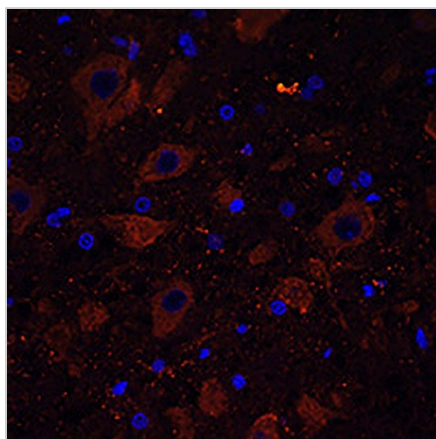
DATA



Western blot analysis of Dopamine Transporter expression in HEK293T (A) whole cell lysates. (Predicted band size: 68 kD; Observed band size: 72; 90 kD)



Immunohistochemical analysis of Dopamine Transporter staining in rat brain formalin fixed paraffin embedded tissue section. The section was pre-treated using heat mediated antigen retrieval with sodium citrate buffer (pH 6.0). The section was then incubated with the antibody at room temperature and detected using an HRP conjugated compact polymer system. DAB was used as the chromogen. The section was then counterstained with haematoxylin and mounted with DPX.



Immunofluorescent analysis of Dopamine Transporter staining in rat brain. Formalin-fixed cells were permeabilized with 0.1% Triton X-100 in TBS for 5-10 minutes and blocked with 3% BSA-PBS for 30 minutes at room temperature. Cells were probed with the primary antibody in 3% BSA-PBS and incubated overnight at 4 °C in a humidified chamber. Cells were washed with PBST and incubated with a AREX® Fluor 594-conjugated secondary antibody (red) in PBS at room temperature in the dark. DAPI was used to stain the cell nuclei (blue).

STORAGE

Store at 4°C short term. For long term storage, store at -20°C, avoiding freeze/thaw cycles.

NOTE

For Research Use Only. Not for diagnostic, therapeutics, prophylactic or in vivo use.