

DATASHEET

SERT Rabbit Polyclonal Antibody

CAT. NO. APA16909

KEY FEATURES

Target	SERT	Source / Host	Rabbit
Reactivity	Human, Mouse, Rat	Clonality	Polyclonal
Applications	WB, IHC	Conjugation	Unconjugated
Form / Buffer	Liquid in 0.42% Potassium phosphate, 0.87% Sodium chloride, pH 7.3, 30% glycerol, and 0.01% sodium azide.		Storage at -20°C

BACKGROUND

Serotonin transporter that cotransports serotonin with one Na⁽⁺⁾ ion in exchange for one K⁽⁺⁾ ion and possibly one proton in an overall electroneutral transport cycle. Transports serotonin across the plasma membrane from the extracellular compartment to the cytosol thus limiting serotonin intercellular signaling ion in exchange for one K⁽⁺⁾ ion and possibly one proton in an overall electroneutral transport cycle. Transports serotonin across the plasma membrane from the extracellular compartment to the cytosol thus limiting serotonin intercellular signaling . Essential for serotonin homeostasis in the central nervous system.

APPLICATION

To ensure optimal assay performance, AREX recommends conducting reagent titration tailored to each testing system for optimal detection results.

WB	1:500 - 1:2000
IHC	1:50 - 1:200

*Results are sample-specific. Please refer to your local assay conditions and test parameters for reference.

PRODUCT OVERVIEW

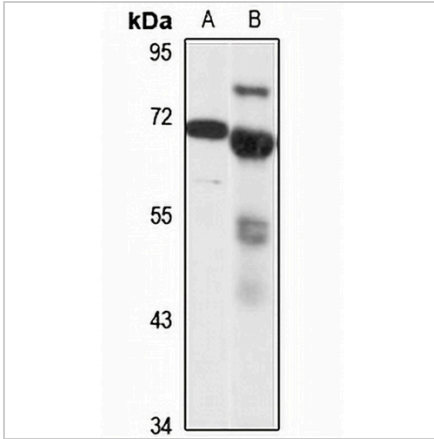
Description	Rabbit polyclonal antibody to SERT
Specificity	Recognizes endogenous levels of SERT protein
Antibody Type	Primary antibody
Immunogen	KLH-conjugated synthetic peptide of human SERT. The exact sequence is proprietary.
Purification	The antibody was purified by immunogen affinity chromatography.
Molecular Weight	Predicted: 70; Observed: 75 kD
Form/Buffer	Liquid in 0.42% Potassium phosphate, 0.87% Sodium chloride, pH 7.3, 30% glycerol, and 0.01% sodium azide.
Alternative Names	HTT; SERT; Sodium-dependent serotonin transporter; 5HT transporter; 5HTT; Solute carrier family 6 member 4
Gene Symbol	SLC6A4
Entrez Gene	6532(Human); 15567(Mouse); 25553(Rat)
SwissProt	P31645(Human); Q60857(Mouse); P31652(Rat)

*AREX continuously optimizes our products. Webpage content may not reflect the latest updates. For inquiries, please contact info@arexbio.com or your local distributor.

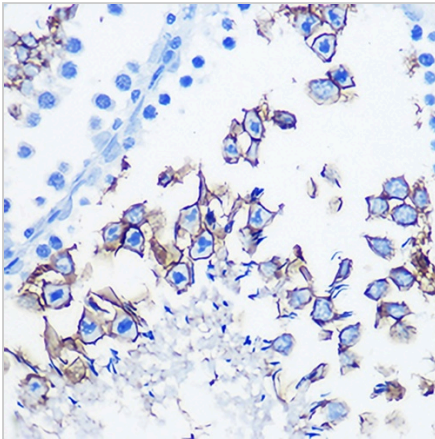
*Clone Number, Reactivity, Source/Host and Clonality can be found in the product name and Key Features section above.

DATASHEET**SERT Rabbit Polyclonal Antibody**

CAT. NO. APA16909

DATA

Western blot analysis of SERT expression in U251MG (A), mouse lung (B) whole cell lysates. (Predicted band size: 70; 74 kD; Observed band size: 75 kD)



Immunohistochemical analysis of SERT staining in rat testis formalin fixed paraffin embedded tissue section. The section was pre-treated using heat mediated antigen retrieval with sodium citrate buffer (pH 6.0). The section was then incubated with the antibody at room temperature and detected using an HRP conjugated compact polymer system. DAB was used as the chromogen. The section was then counterstained with haematoxylin and mounted with DPX.

STORAGE

Store at 4°C short term. For long term storage, store at -20°C, avoiding freeze/thaw cycles.

NOTE

For Research Use Only. Not for diagnostic, therapeutics, prophylactic or in vivo use.