

**DATASHEET**

**SLC6A9 Rabbit Polyclonal Antibody**

CAT. NO. APA16910

**KEY FEATURES**

Target	SLC6A9	Source / Host	Rabbit
Reactivity	Human, Mouse, Rat	Clonality	Polyclonal
Applications	WB	Conjugation	Unconjugated
Form / Buffer	Liquid in 0.42% Potassium phosphate, 0.87% Sodium chloride, pH 7.3, 30% glycerol, and 0.01% sodium azide.	Storage	at-20°C

**BACKGROUND**

Sodium- and chloride-dependent glycine transporter . Essential for regulating glycine concentrations at inhibitory glycinergic synapses.

**APPLICATION**

To ensure optimal assay performance, AREX recommends conducting reagent titration tailored to each testing system for optimal detection results.

WB	1:500 - 1:2000
----	----------------

\*Results are sample-specific. Please refer to your local assay conditions and test parameters for reference.

**PRODUCT OVERVIEW**

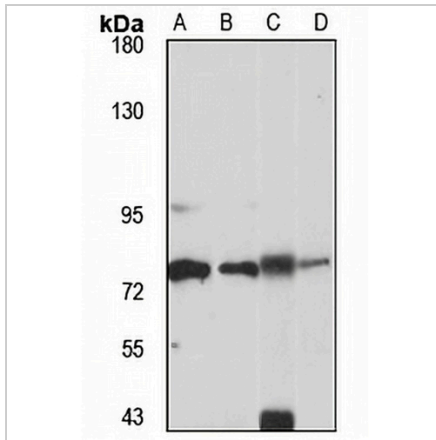
Description	Rabbit polyclonal antibody to SLC6A9
Specificity	Recognizes endogenous levels of SLC6A9 protein
Antibody Type	Primary antibody
Immunogen	Recombinant fusion protein of human SLC6A9. The exact sequence is proprietary.
Purification	The antibody was purified by immunogen affinity chromatography.
Molecular Weight	Predicted: 78 kD; Observed: 75 kD
Form/Buffer	Liquid in 0.42% Potassium phosphate, 0.87% Sodium chloride, pH 7.3, 30% glycerol, and 0.01% sodium azide.
Alternative Names	Sodium- and chloride-dependent glycine transporter 1; GlyT-1; GlyT1; Solute carrier family 6 member 9
Gene Symbol	SLC6A9
Entrez Gene	6536(Human); 14664(Mouse); 116509(Rat)
SwissProt	P48067(Human); P28571(Mouse); P28572(Rat)

\*AREX continuously optimizes our products. Webpage content may not reflect the latest updates. For inquiries, please contact [info@arexbio.com](mailto:info@arexbio.com) or your local distributor.

\*Clone Number, Reactivity, Source/Host and Clonality can be found in the product name and Key Features section above.

**DATASHEET****SLC6A9 Rabbit Polyclonal Antibody**

CAT. NO. APA16910

**DATA**

Western blot analysis of SLC6A9 expression in K562 (A), MCF7 (B), mouse liver (C), rat liver (D) whole cell lysates. (Predicted band size: 78 kD; Observed band size: 75 kD)

**STORAGE**

Store at 4°C short term. For long term storage, store at -20°C, avoiding freeze/thaw cycles.

**NOTE**

For Research Use Only. Not for diagnostic, therapeutics, prophylactic or in vivo use.