

DATASHEET

SLC7A1 Rabbit Polyclonal Antibody

CAT. NO. APA16911

KEY FEATURES

Target	SLC7A1	Source / Host	Rabbit
Reactivity	Human, Mouse, Rat	Clonality	Polyclonal
Applications	WB	Conjugation	Unconjugated
Form / Buffer	Liquid in 0.42% Potassium phosphate, 0.87% Sodium chloride, pH 7.3, 30% glycerol, and 0.01% sodium azide.		Storage at-20°C

BACKGROUND

High-affinity, low capacity permease involved in the transport of the cationic amino acids (arginine, lysine and ornithine) in non-hepatic tissues.

APPLICATION

To ensure optimal assay performance, AREX recommends conducting reagent titration tailored to each testing system for optimal detection results.

WB	1:500 - 1:2000
----	----------------

*Results are sample-specific. Please refer to your local assay conditions and test parameters for reference.

PRODUCT OVERVIEW

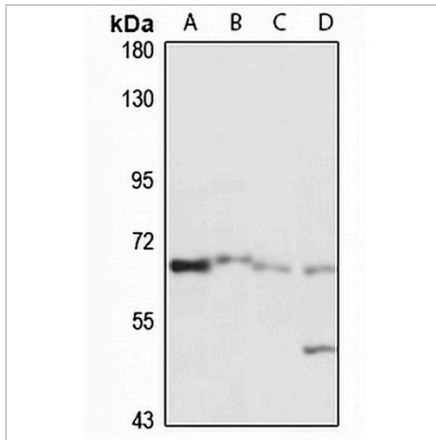
Description	Rabbit polyclonal antibody to SLC7A1
Specificity	Recognizes endogenous levels of SLC7A1 protein
Antibody Type	Primary antibody
Immunogen	KLH-conjugated synthetic peptide of human SLC7A1. The exact sequence is proprietary.
Purification	The antibody was purified by immunogen affinity chromatography.
Molecular Weight	Predicted: 67 kD; Observed: 68 kD
Form/Buffer	Liquid in 0.42% Potassium phosphate, 0.87% Sodium chloride, pH 7.3, 30% glycerol, and 0.01% sodium azide.
Alternative Names	ATRC1; ERR; REC1L; High affinity cationic amino acid transporter 1; CAT-1; CAT1; Ecotropic retroviral leukemia receptor homolog; Ecotropic retrovirus receptor homolog; ERR; Solute carrier family 7 member 1; System Y+ basic amino acid transporter
Gene Symbol	SLC7A1
Entrez Gene	6541(Human); 11987(Mouse); 25648(Rat)
SwissProt	P30825(Human); Q09143(Mouse); P30823(Rat)

*AREX continuously optimizes our products. Webpage content may not reflect the latest updates. For inquiries, please contact info@arexbio.com or your local distributor.

*Clone Number, Reactivity, Source/Host and Clonality can be found in the product name and Key Features section above.

DATASHEET**SLC7A1 Rabbit Polyclonal Antibody**

CAT. NO. APA16911

DATA

Western blot analysis of SLC7A1 expression in Jurkat (A), mouse testis (B), rat brain (C), rat liver (D) whole cell lysates. (Predicted band size: 67 kD; Observed band size: 68 kD)

STORAGE

Store at 4°C short term. For long term storage, store at -20°C, avoiding freeze/thaw cycles.

NOTE

For Research Use Only. Not for diagnostic, therapeutics, prophylactic or in vivo use.